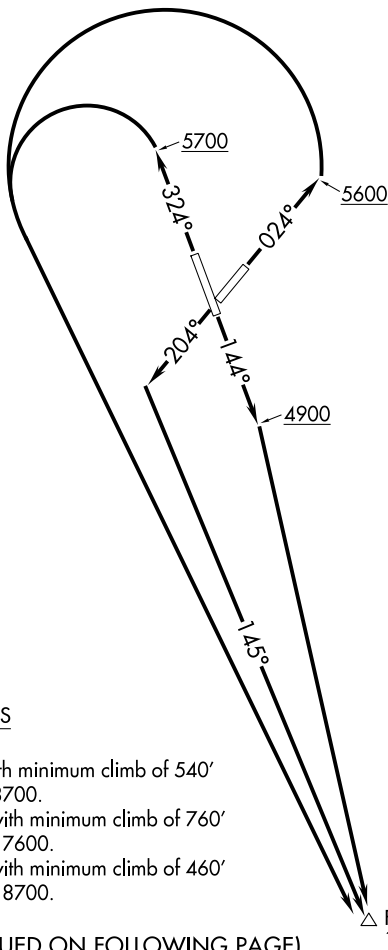


FESKO ONE DEPARTURE (OBSTACLE) (RNAV)

WINNEMUCCA MUNI (WMC)
WINNEMUCCA, NEVADA

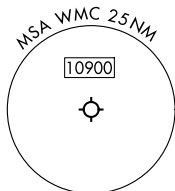
RNAV 1 - GPS

SALT LAKE CITY CENTER
132.25 338.35
ASOS
120.175
CTAF
122.8



TAKEOFF MINIMUMS

- Rwy 14: Standard.
- Rwy 2: Standard with minimum climb of 540' per NM to 8700.
- Rwy 20: Standard with minimum climb of 760' per NM to 7600.
- Rwy 32: Standard with minimum climb of 460' per NM to 8700.



(NOTES CONTINUED ON FOLLOWING PAGE)

NOTE: Chart not to scale.

DEPARTURE ROUTE DESCRIPTION

TAKEOFF RUNWAY 2: Climb on heading 024° to 5600, then left turn direct FESKO, thence. . . .

TAKEOFF RUNWAY 14: Climb on heading 144° to 4900, then direct FESKO, thence. . . .

TAKEOFF RUNWAY 20: Climb on heading 204° to intercept course 145° to FESKO, thence. . . .

TAKEOFF RUNWAY 32: Climb on heading 324° to 5700, then left turn direct FESKO, thence. . . .

. . . .cross FESKO at or above 11000 before proceeding on assigned route of flight.

FESKO ONE DEPARTURE (OBSTACLE) (RNAV)

FESKO ONE DEPARTURE (OBSTACLE) (RNAV)

TAKEOFF OBSTACLE NOTES

- Rwy 2: Tree, navaid beginning 3' from DER, 113' right of centerline, up to 4356' MSL.
 Navaid 39' from DER, 118' left of centerline, 8' AGL/4311' MSL.
 Tree 81' from DER 402' right of centerline 4357' MSL.
 Tree, vehicles traverse way beginning, 98' from DER, 230' right of centerline, up to 4373' MSL.
 Tree 1177' from DER 576' left of centerline 4346' MSL.
 Tree 1265' from DER 763' left of centerline 4349' MSL.
 Tree 1404' from DER 647' left of centerline 4360' MSL.

- Rwy 14: Pole 1' from DER 24' left of centerline 4304' MSL.
 Navaid 40' from DER, 126' left of centerline, 4305' MSL.
 Vehicles on traverse way, vegetation, trees beginning 58' from DER, 183' left of centerline, up to 40' AGL/4322' MSL.
 Vehicles on traverse way beginning, 343' from DER, 77' left of centerline, up to 4325' MSL.

- Rwy 20: Tree 26' from DER 406' right of centerline 4306' MSL.
 Trees beginning, 46' from DER, 63' right of centerline, up to 40' AGL/4329' MSL.
 Pole 65' from DER, 385' left of centerline 8' AGL/4311' MSL.

- Rwy 32: Navaid 39' from DER, 123' left of centerline, 3' AGL/4303' MSL.
 Vegetation 77' from DER, 351' left of centerline, 4304' MSL.
 Tree 166' from DER, 478' right of centerline 4306' MSL.
 Vehicles on traverse way beginning 184' from DER, 405' left of centerline, up to 4314' MSL.
 Vehicles on traverse way, 273' from DER, 267' right of centerline, up to 4316' MSL.

SW-4, 16 APR 2026 to 14 MAY 2026

SW-4, 16 APR 2026 to 14 MAY 2026