

WAAS CH <b>72702</b> <b>W32A</b>	APP CRS <b>324°</b>	Rwy Ldg TDZE Apt Elev	<b>7000</b> <b>4304</b> <b>4308</b>
--	------------------------	-----------------------------	---

# RNAV (GPS) RWY 32

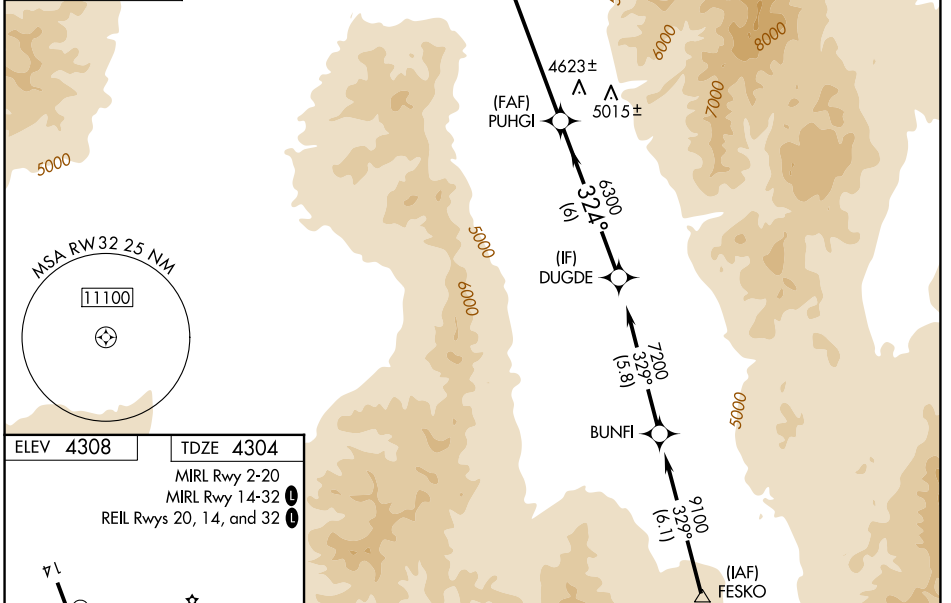
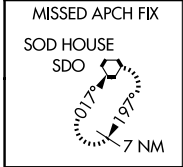
WINNEMUCCA MUNI (WMC)

RNP APCH.

**⚠** Rwy 32 helicopter visibility reduction below 3/4 SM NA.  
**⚠** VDP NA when using Battle Mountain altimeter setting.  
 When local altimeter setting not received, use Battle Mountain altimeter setting and increase all DAs/MDAs 140 feet.

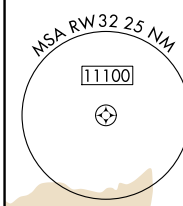
MISSED APPROACH: Climb to 10000 direct EXATY and on track 326° to SDO VORTAC and hold.

ASOS <b>120.175</b>	SALT LAKE CITY CENTER <b>132.25 338.35</b>	UNICOM <b>122.8 (CTAF) 0</b>
------------------------	---	---------------------------------

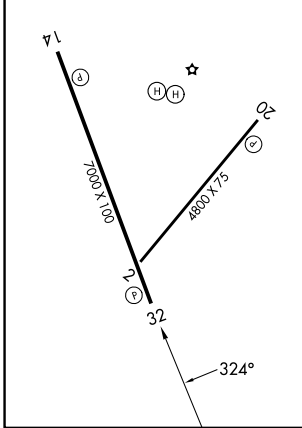


SW-4, 16 APR 2026 to 14 MAY 2026

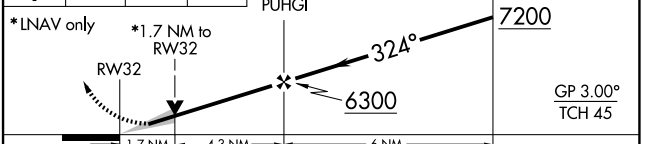
SW-4, 16 APR 2026 to 14 MAY 2026



ELEV 4308	TDZE 4304
MIRL Rwy 2-20	
MIRL Rwy 14-32	<b>(L)</b>
REIL Rws 20, 14, and 32	<b>(L)</b>



10000	EXATY	tr 326°	SDO	VGSI And RNAV glidepath not coincident (VGSI Angle 3.00/TCH 40).
↑	⬠		⬠	DUGDE



CATEGORY	A	B	C	D
LPV DA	4554-3/4 250 (300-3/4)			
RNAV MDA	4880-1	576 (600-1)	4880-1 1/2 576 (600-1 1/2)	4880-1 3/4 576 (600-1 3/4)