

WAAS CH <b>65903</b> <b>W01A</b>	APP CRS <b>007°</b>	Rwy Ldg <b>4206</b> TDZE <b>794</b> Apt Elev <b>798</b>
--	------------------------	---

# RNAV (GPS) RWY 1

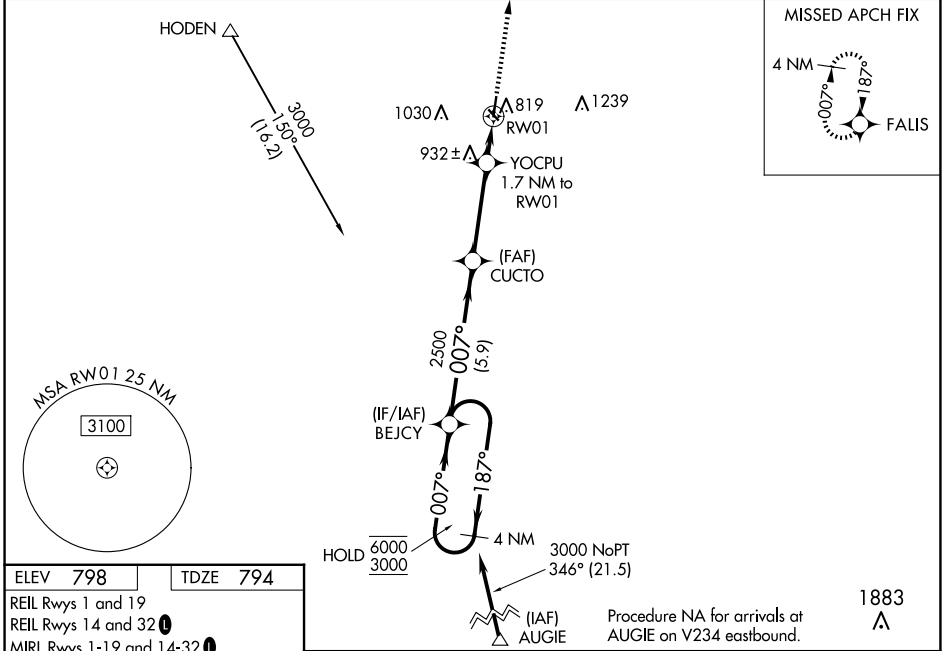
SKYHAVEN (RCM)

RNP APCH - GPS.

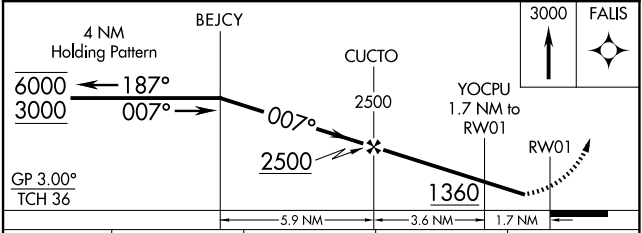
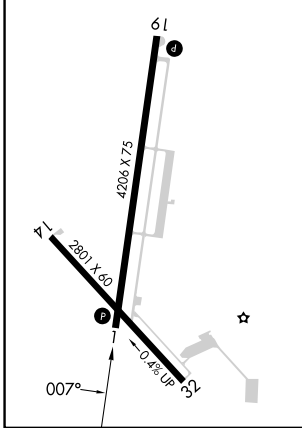
**⚠** Baro-VNAV NA when using SZL altimeter setting. Rwy 1 helicopter visibility reduction below 3/4 SM NA. For uncompensated Baro-VNAV systems, LNAV/VNAV NA below -16°C or above 54°C. When local altimeter setting not received, use SZL altimeter setting and increase LPV DA to 1083 feet; increase LNAV/VNAV DA to 1194 feet and all visibilities 1/2 SM; increase all MDAs 40 feet and LNAV visibility Cat C 1/2 SM, and Circling visibility Cat C 1/4 SM.

MISSED APPROACH: Climb to 3000 direct FALIS and hold.

AWOS-3PT <b>119.575</b>	WHITEMAN APP CON ★ <b>127.45 284.0</b>	UNICOM <b>123.0</b> (CTAF) <b>0</b>
----------------------------	---	--



ELEV 798	TDZE 794
REIL Rwy 1 and 19	
REIL Rwy 14 and 32	
MIRL Rwy 1-19 and 14-32	



CATEGORY	A	B	C	D
LPV DA	1044-1 250 (300-1)			NA
LNAV/ VNAV DA	1155-1 361 (400-1)			NA
LNAV MDA	1220-1	426 (500-1)	1220-1 1/4 426 (500-1 1/4)	NA
<b>C</b> CIRCLING	1260-1 462 (500-1)	1340-1 542 (600-1)	1380-1 1/2 582 (600-1 1/2)	NA

NC-3, 16 APR 2026 to 14 MAY 2026

NC-3, 16 APR 2026 to 14 MAY 2026