

WAAS CH <b>53629</b> <b>W01A</b>	APP CRS <b>009°</b>	Rwy Ldg <b>4406</b> TDZE <b>889</b> Apt Elev <b>898</b>
--	------------------------	---

# RNAV (GPS) RWY 1

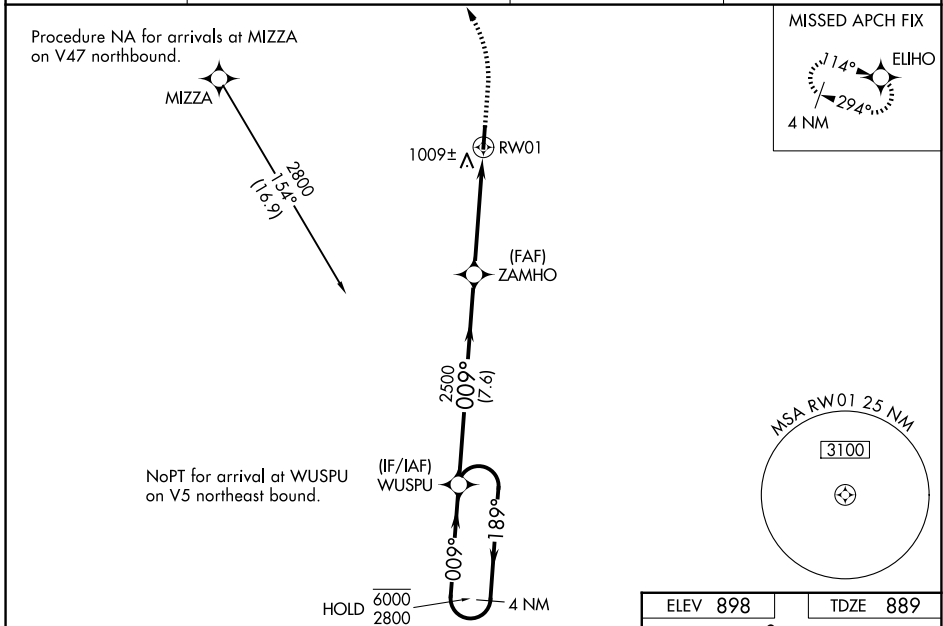
WARREN COUNTY/JOHN LANE FLD (I68)

RNP APCH - GPS.

**⚠** For uncompensated Baro-VNAV systems, LNAV/VNAV NA below -16°C or above 54°C. Baro-VNAV NA when using MGY altimeter setting. When local altimeter setting not received use MGY altimeter setting and increase LPV DA to 1179 feet and LNAV/VNAV DA to 1288 and all visibilities 1/8 SM. Increase all MDA 40 feet; increase LNAV Cat C/D visibility 1/8 SM and Circling Cat C visibility 1/4 SM. When Circling to Rwy 19 at night, operational VGSI required, remain on or above VGSI glidepath until threshold. Rwy 1 helicopter visibility reduction below 3/4 SM NA.

MISSED APPROACH: Climb to 1400 then climbing left turn to 3000 direct ELIHO and hold.

AWOS-3PT <b>120.55</b>	COLUMBUS APP CON <b>118.85 269.275</b>	CLNC DEL <b>119.4</b>	UNICOM <b>123.075 (CTAF) 0</b>
---------------------------	---	--------------------------	-----------------------------------

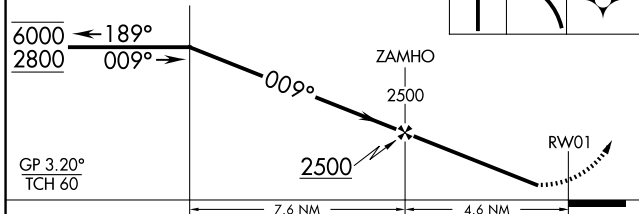


4 NM Holding Pattern

VGSI and RNAV glidepath not coincident (VGSI Angle 3.20/TCH 33).

WUSPU

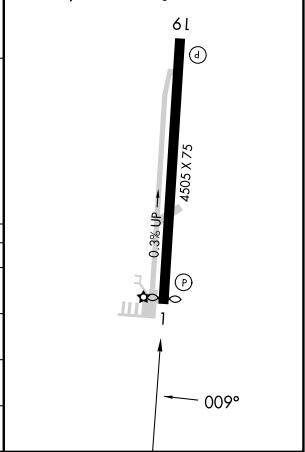
1400 3000 ELIHO



ELEV 898	TDZE 889
----------	----------

MIRL Rwy 1-19

REIL Rwy 1 and 19



CATEGORY	A	B	C	D
LPV DA	1153-1 264 (300-1)			NA
LNAV/VNAV DA	1262-1 373 (400-1)			NA
LNAV MDA	1260-1 371 (400-1)			
CIRCLING	1400-1 502 (600-1)	1480-1 582 (600-1)	1480-1 1/2 582 (600-1 1/2)	1500-2 602 (700-2)

EC-2, 16 APR 2026 to 14 MAY 2026

EC-2, 16 APR 2026 to 14 MAY 2026