

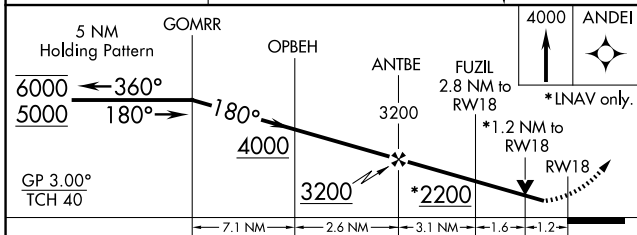
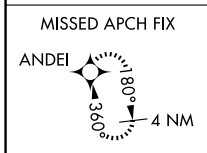
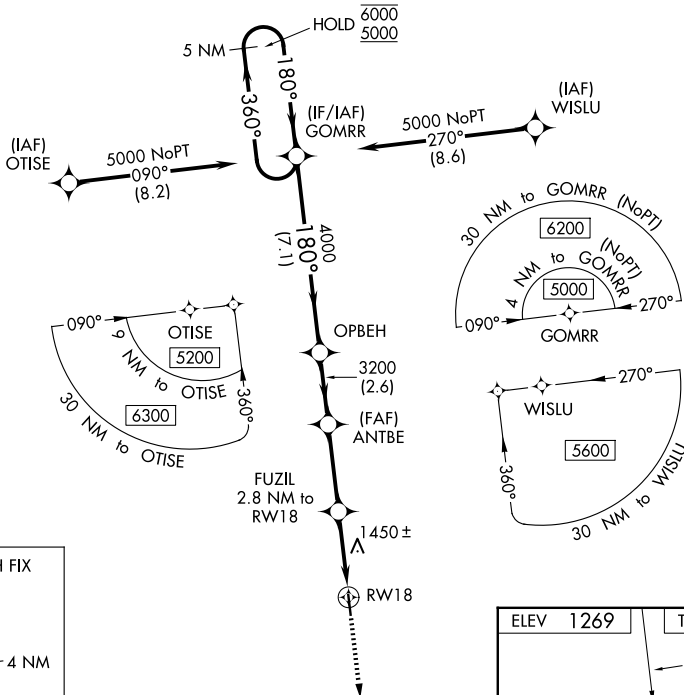
WAAS CH <b>58317</b> <b>W18A</b>	APP CRS <b>180°</b>	Rwy Ldg <b>5500</b> TDZE <b>1269</b> Apt Elev <b>1269</b>
--	------------------------	---

# RNAV (GPS) RWY 18

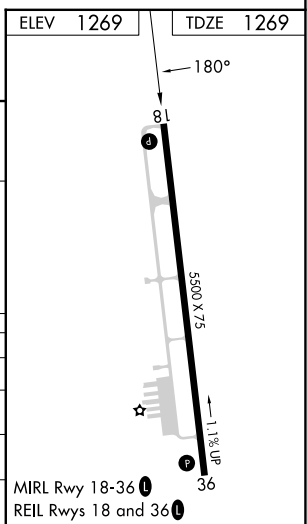
MOUNT AIRY/SURRY COUNTY (M<sup>1</sup>WK)

RNP APCH.	MISSED APPROACH: Climb to 4000 direct ANDEI and hold.
<p>▼ Rwy 18 helicopter visibility reduction below <math>\frac{3}{4}</math> SM NA. For uncompensated Baro-VNAV systems, LNAV/VNAV NA below -17°C or above 54°C.</p> <p>▲</p>	

AWOS-3 <b>121.125</b>	GREENSBORO APP CON <b>124.35 269.225</b>	UNICOM <b>123.0 (CTAF) 0</b>
--------------------------	---	---------------------------------



CATEGORY	A	B	C	D
LPV DA		1522-1	253 (300-1)	
LNAV/VNAV DA		1742-1 $\frac{3}{8}$	473 (500-1 $\frac{3}{8}$ )	
LNAV MDA	1700-1	431 (500-1)	1700-1 $\frac{1}{4}$	431 (500-1 $\frac{1}{4}$ )
CIRCLING	1940-1 671 (700-1)	2040-1 771 (800-1)	2180-2 $\frac{3}{4}$ 911 (1000-2 $\frac{3}{4}$ )	2340-3 1071 (1100-3)



SE-2, 16 APR 2026 to 14 MAY 2026

SE-2, 16 APR 2026 to 14 MAY 2026