

(YOTES6.YOTES) 18144

# YOTES SIX DEPARTURE (RNAV)

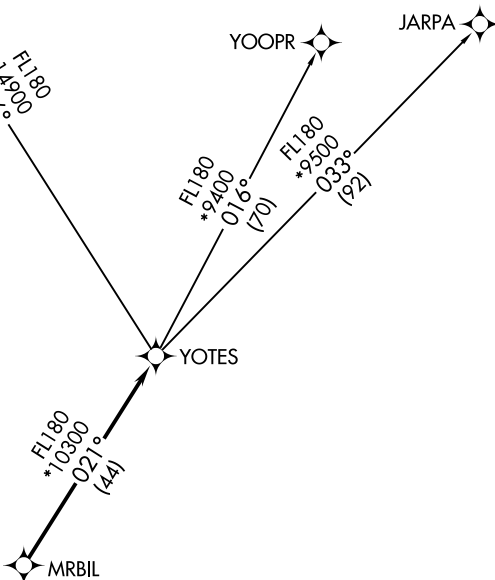
AL-6494 (FAA)

CHANDLER MUNI (CHD)  
CHANDLER, ARIZONA

ATIS  
128.325  
GND CON  
124.4  
CHANDLER TOWER\*  
126.1 (Rwy 4L-22R)  
133.1 (Rwy 4R-22L)  
PHOENIX DEP CON  
123.7 363.0

GRAND CANYON  
GCN

**TOP ALTITUDE:  
ASSIGNED BY ATC**



### TAKEOFF MINIMUMS

Rwys 4L/R, 22L/R: Standard.

- NOTE: RNAV 1.
- NOTE: Turbojets and turboprops only.
- NOTE: RADAR required.
- NOTE: GPS required.
- NOTE: GCN TRANSITION ATC assigned only.
- NOTE: Aircraft departing KGEU and KGYR ATC assigned only.

NOTE: Chart not to scale.

### DEPARTURE ROUTE DESCRIPTION

TAKEOFF RUNWAYS 4L/R: Climb heading 038° or as assigned by ATC, thence. . .

TAKEOFF RUNWAYS 22L/R: Climb heading 218° or as assigned by ATC, thence. . .

. . . expect RADAR vectors to MRBIL, then on track 021° to YOTES, then on (transition).  
Maintain ATC assigned altitude, expect filed altitude 3 minutes after departure.

GRAND CANYON TRANSITION (YOTES6.GCN)

JARPA TRANSITION (YOTES6.JARPA)

YOOPR TRANSITION (YOTES6.YOOPR)

# YOTES SIX DEPARTURE (RNAV)

(YOTES6.YOTES) 24MAY18

CHANDLER, ARIZONA  
CHANDLER MUNI (CHD)

SW-4, 16 APR 2026 to 14 MAY 2026

SW-4, 16 APR 2026 to 14 MAY 2026