

VORTAC PER 113.2 Chan 79	APP CRS 263°	Rwy Idg TDZE Apt Elev	N/A N/A 1030
--	------------------------	-----------------------------	---

VOR-A

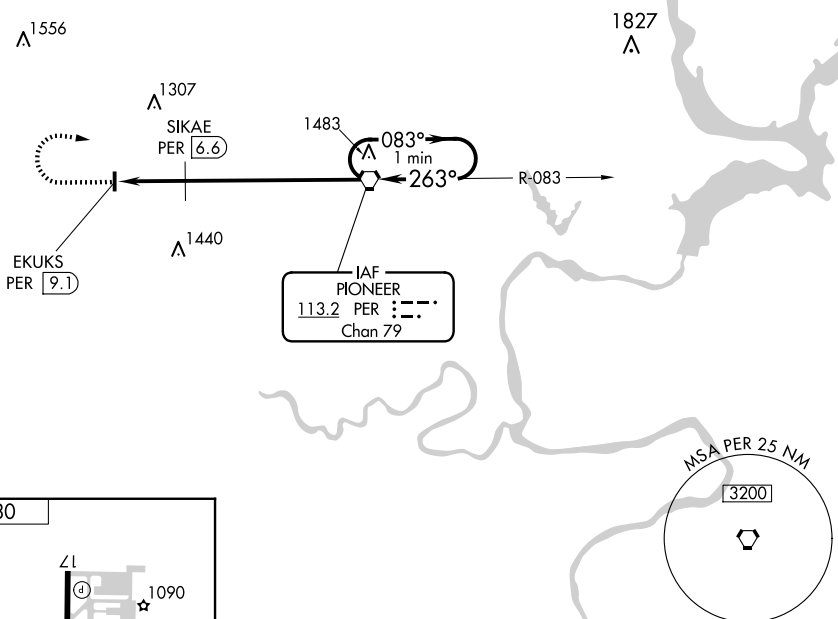
BLACKWELL-TONKAWA MUNI (BKN)

⚠ When local altimeter setting not received, use Ponca City altimeter setting and increase all MDA 40 feet. **MISSED APPROACH:** Climb to 2800 then right turn direct PER VORTAC and hold.

AWOS-3PT
120.575

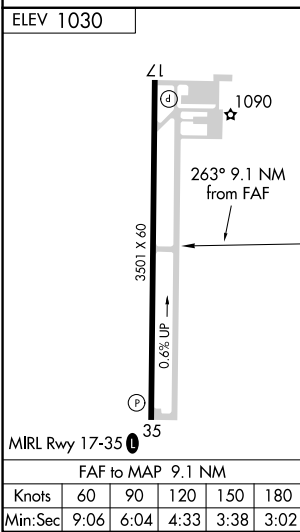
KANSAS CITY CENTER
127.8 319.1

UNICOM
122.8 (CTAF) **①**



SC-1, 16 APR 2026 to 14 MAY 2026

SC-1, 16 APR 2026 to 14 MAY 2026



2800	PER	One Minute Holding Pattern		
PER VORTAC	SIKAE PER 6.6	083° → 2800		
EKUKS PER 9.1	1640*	← 263°		
2.5 NM		6.6 NM		
CATEGORY	A	B	C	D
CIRCLING	1640-1	610 (700-1)	1640-1 ³ / ₄ 610 (700-1 ³ / ₄)	NA
SIKAE FIX MINIMUMS				
CIRCLING	1440-1 410 (500-1)	1480-1 450 (500-1)	1620-1 ³ / ₄ 590 (600-1 ³ / ₄)	NA

* 1680 when using Ponca City altimeter setting