

RNAV 1 - DME/DME/IRU or GPS required.
RADAR required for non-GPS equipped aircraft.

LONE STAR DEP CON
135.975 379.9
CTAF
122.7

NOTE: ALIAN Transition: ATC assigned only.

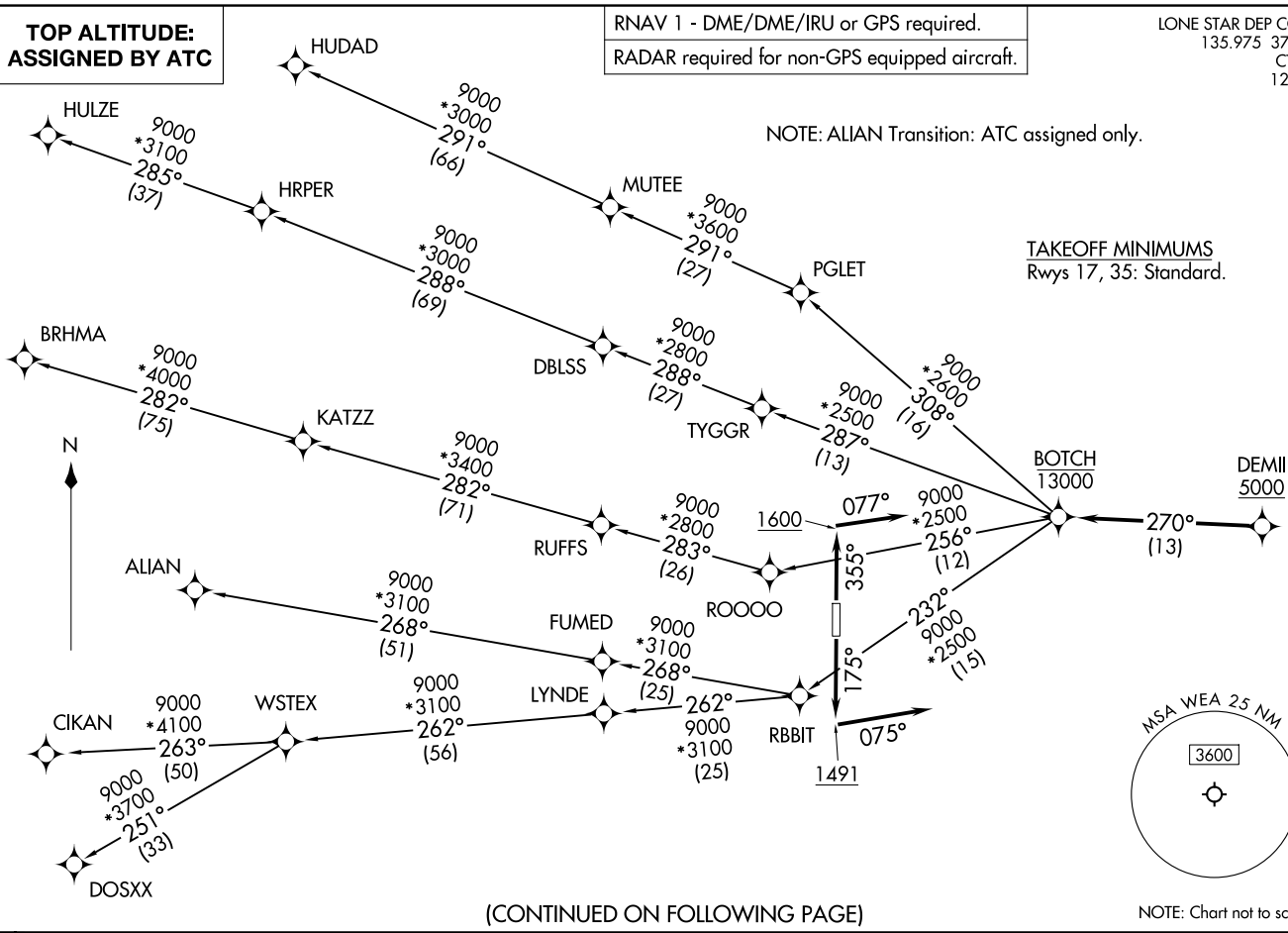
TAKEOFF MINIMUMS
Rwys 17, 35: Standard.

TOP ALTITUDE:
ASSIGNED BY ATC

BOTCH ONE DEPARTURE (RNAV)
(BOTCH1 .BOTCH) 17ZAPR25

(BOTCH1 .BOTCH) 25107
AL-6497 (FAA)

PARKER COUNTY (WEA)
WEATHERFORD, TEXAS



(CONTINUED ON FOLLOWING PAGE)

NOTE: Chart not to scale.

WEATHERFORD, TEXAS
PARKER COUNTY (WEA)

BOTCH ONE DEPARTURE (RNAV)



DEPARTURE ROUTE DESCRIPTION

TAKEOFF RUNWAY 17: Climb on heading 175° to 1491, then on heading 075° or as assigned by ATC, for vectors to cross DEMIL at or above 5000, thence. . .

TAKEOFF RUNWAY 35: Climb on heading 355° to 1600, then on heading 077° or as assigned by ATC, for vectors to cross DEMIL at or above 5000, thence. . .

. . . on track 270° to cross BOTCH at or below 13000, then on (transition). Maintain ATC assigned altitude, expect filed altitude 10 minutes after departure.

ALIAN TRANSITION (BOTCH1.ALIAN)

BRHMA TRANSITION (BOTCH1.BRHMA)

CIKAN TRANSITION (BOTCH1.CIKAN)

DOSXX TRANSITION (BOTCH1.DOSXX)

HUDAD TRANSITION (BOTCH1.HUDAD)

HULZE TRANSITION (BOTCH1.HULZE)

WSTEX TRANSITION (BOTCH1.WSTEX)

SC-2, 16 APR 2026 to 14 MAY 2026

SC-2, 16 APR 2026 to 14 MAY 2026