

KUSSO TWO DEPARTURE (RNAV)  
(KUSSO2.KUSSO) 22JAN26

(KUSSO2.KUSSO) 26022  
KUSSO TWO DEPARTURE (RNAV)

AL-6497 (FAA)

PARKER COUNTY (WEA)  
WEATHERFORD, TEXAS

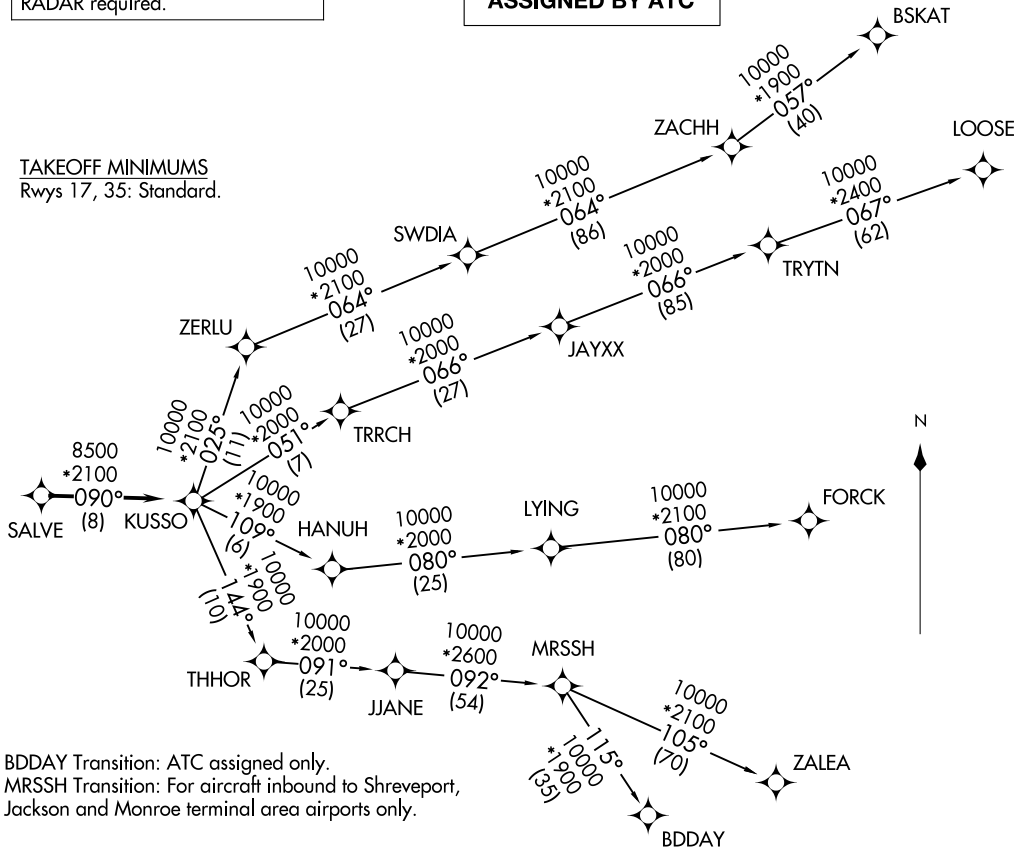
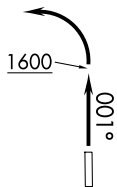
LONE STAR DEP CON  
135.975 379.9  
CTAF  
122.7

RNAV 1 - DME/DME/IRU or GPS.

RADAR required.

**TOP ALTITUDE:  
ASSIGNED BY ATC**

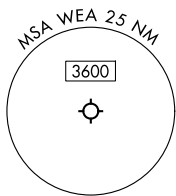
TAKEOFF MINIMUMS  
Rwys 17, 35: Standard.



NOTE: BDDAY Transition: ATC assigned only.  
NOTE: MRSSH Transition: For aircraft inbound to Shreveport,  
Jackson and Monroe terminal area airports only.

(CONTINUED ON FOLLOWING PAGE)

NOTE: Chart not to scale.



WEATHERFORD, TEXAS  
PARKER COUNTY (WEA)

# KUSSO TWO DEPARTURE (RNAV)



## DEPARTURE ROUTE DESCRIPTION

TAKEOFF RUNWAY 35: Climb on heading 001° to 1600 before turning left.

When entering controlled airspace, fly heading assigned by ATC, expect vector to SALVE, then on track 090° to KUSSO, then on assigned transition. Maintain ATC assigned altitude, expect filed altitude 10 minutes after departure.

BDDAY TRANSITION (KUSSO2.BDDAY)

BSKAT TRANSITION (KUSSO2.BSKAT)

FORCK TRANSITION (KUSSO2.FORCK)

LOOSE TRANSITION (KUSSO2.LOOSE)

MRSSH TRANSITION (KUSSO2.MRSSH)

ZALEA TRANSITION (KUSSO2.ZALEA)

SC-2, 16 APR 2026 to 14 MAY 2026

SC-2, 16 APR 2026 to 14 MAY 2026