

LOC/DME I-RKH	APP CRS	Rwy Ldg	<b>5007</b>
<b>109.95</b>	<b>040°</b>	TDZE	<b>66</b>
Chan <b>36(Y)</b>		Apt Elev	<b>70</b>

# LOC RWY 4

SUFFOLK EXEC (SFQ)

RADAR required for procedure entry at OLUCE INT.

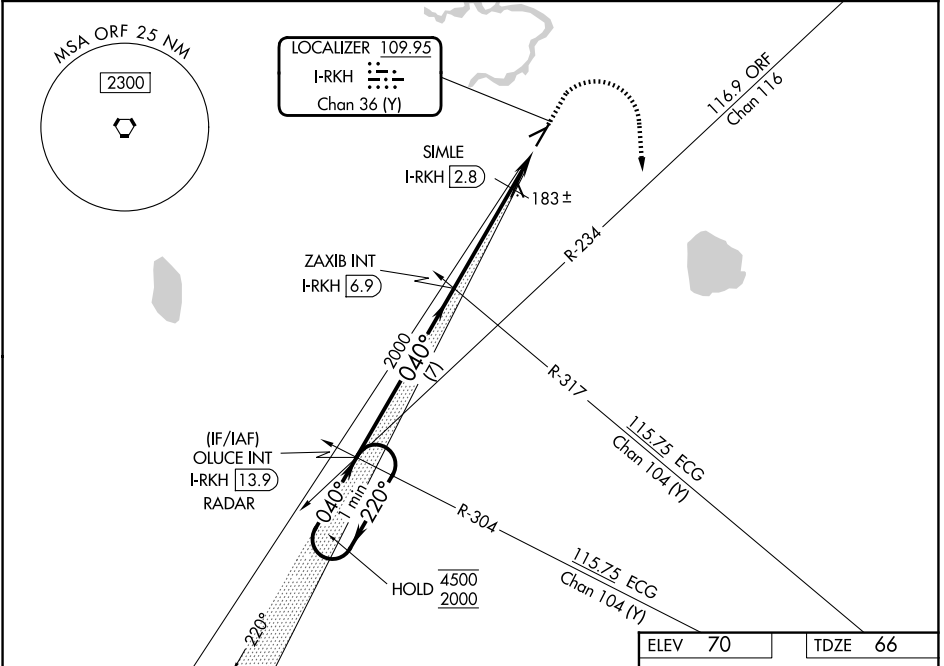
**NA** Rwy 4 helicopter visibility reduction below 3/4 SM NA.

MISSED APPROACH: Climb to 600 then climbing right turn to 2000 on ORF VORTAC R-234 to OLUCE INT/I-RKH 13.9 DME/RADAR and hold.

AWOS-3  
**119.375**

NORFOLK APP CON  
**127.9 269.425**

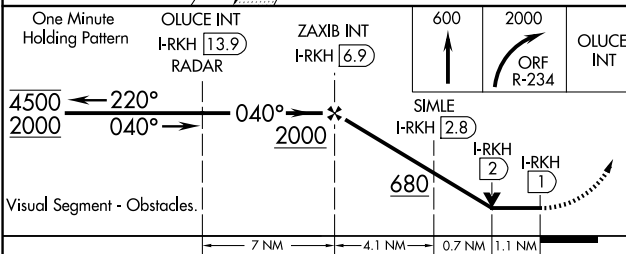
UNICOM  
**122.7 (CTAF) 0**



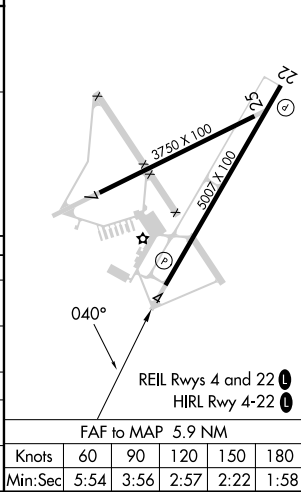
NE-3, 16 APR 2026 to 14 MAY 2026

NE-3, 16 APR 2026 to 14 MAY 2026

ELEV	70	TDZE	66
------	----	------	----



CATEGORY	A	B	C	D
S-LOC 4	680-1	614 (700-1)	680-1¾	614 (700-1¾)
CIRCLING	680-1	610 (700-1)	680-1¾ 610 (700-1¾)	680-2 610 (700-2)
SIMLE FIX MINIMUMS (DME REQUIRED)				
S-LOC 4	440-1 374 (400-1)			
CIRCLING	500-1 430 (500-1)	560-1 490 (500-1)	680-1¾ 610 (700-1¾)	680-2 610 (700-2)



FAF to MAP 5.9 NM		Knots	60	90	120	150	180
		Min:Sec	5:54	3:56	2:57	2:22	1:58