

WAAS CH 99325 W22A	APP CRS 220°	Rwy Ldg 5007 TDZE 69 Apt Elev 70
--	------------------------	---

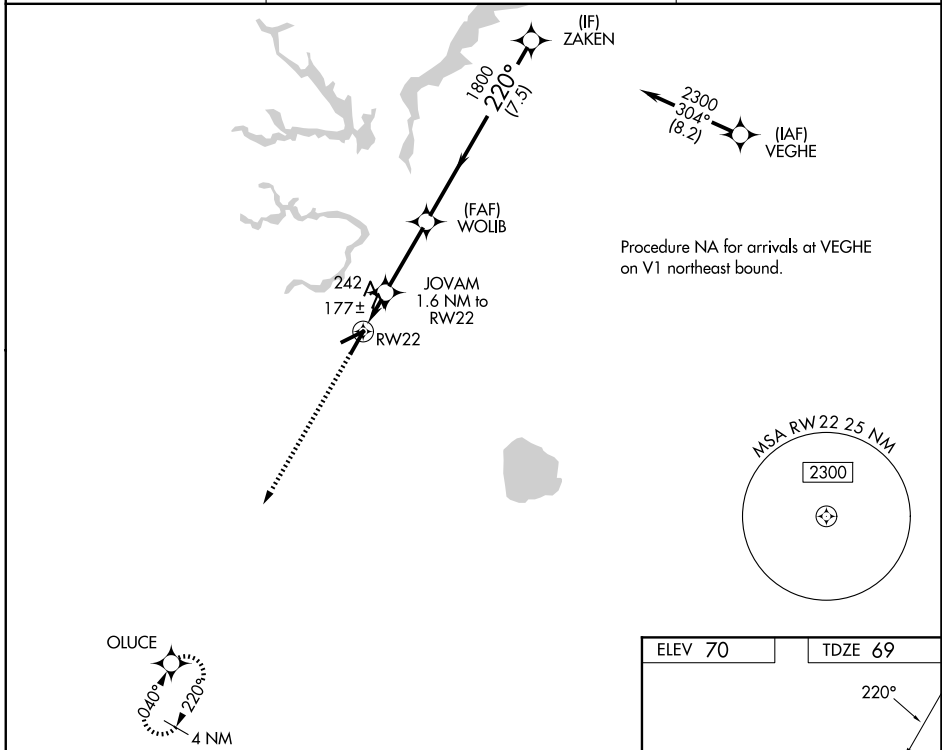
RNAV (GPS) RWY 22

SUFFOLK EXEC (SFQ)

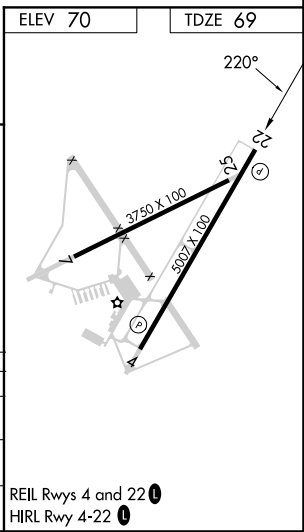
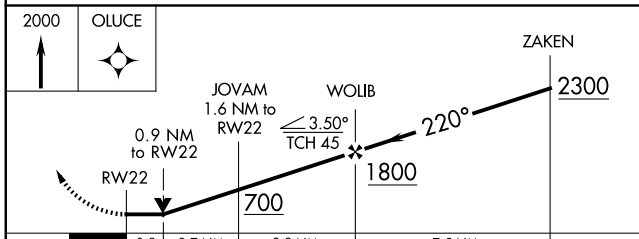
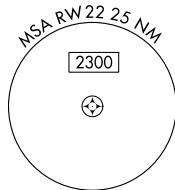
⚠ DME/DME RNP-0.3 NA. Helicopter visibility reduction below 3/4 SM NA. VDP NA with Norfolk Intl altimeter setting. When local altimeter setting not received, use Norfolk Intl altimeter setting and increase all MDA 60 feet, and increase LP Cats C and D visibility 1/4 mile and LNAV Cats C and D visibility 1/8 mile.

MISSED APPROACH:
Climb to 2000 direct OLUCE and hold.

AWOS-3 119.375	NORFOLK APP CON 127.9 269.425	UNICOM 122.7 (CTAF)
--------------------------	---	-------------------------------



Procedure NA for arrivals at VEGHE on V1 northeast bound.



CATEGORY	A	B	C	D
LP MDA	440-1		371 (400-1)	
LNAV MDA	500-1	431 (500-1)	500-1 1/4	431 (500-1 1/4)
CIRCLING	500-1 430 (500-1)	560-1 490 (500-1)	680-1 3/4 610 (700-1 3/4)	680-2 610 (700-2)

REIL Rwy 4 and 22 **Ⓢ**
HIRL Rwy 4-22 **Ⓢ**

NE-3, 16 APR 2026 to 14 MAY 2026

NE-3, 16 APR 2026 to 14 MAY 2026