

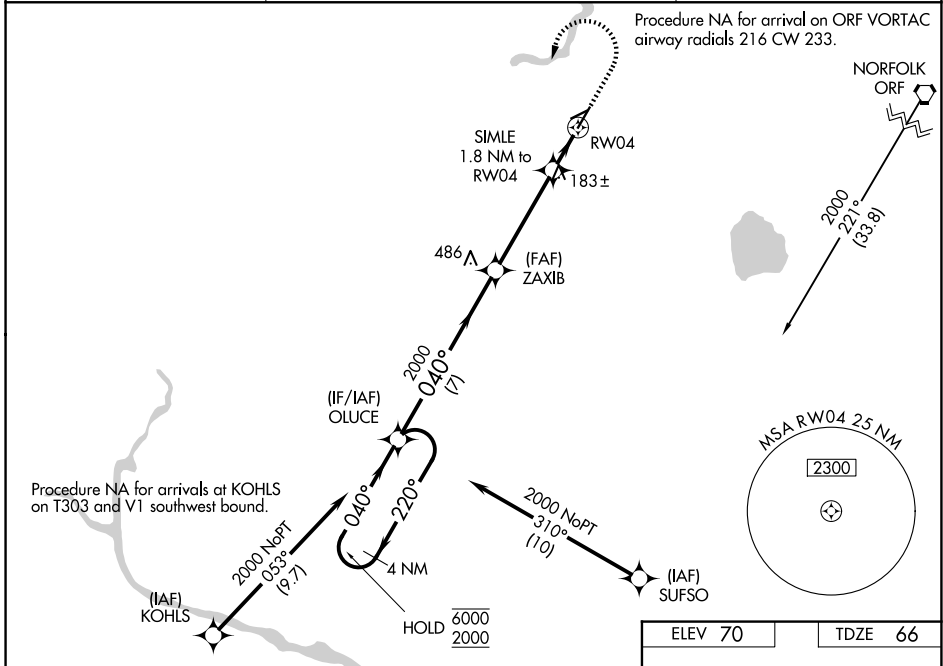
WAAS CH <b>65824</b> <b>W04A</b>	APP CRS <b>040°</b>	Rwy Ldg TDZE <b>66</b> Apt Elev <b>70</b>	<b>5007</b>
--	------------------------	---	-------------

# RNAV (GPS) RWY 4

SUFFOLK EXEC (SF'Q)

RNP APCH - GPS.	MISSED APPROACH: Climb to 600 then climbing left turn to 2000 direct OLUCE and hold.
<b>⚠</b> Rwy 4 helicopter visibility reduction below 3/4 SM NA. <b>⚠</b> For uncompensated Baro-VNAV systems, LNAV/VNAV NA below -1.5°C or above 54°C.	

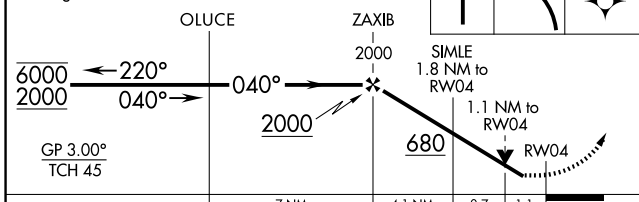
AWOS-3 <b>119.375</b>	NORFOLK APP CON <b>127.9 269.425</b>	UNICOM <b>122.7 (CTAF)</b> <b>0</b>
--------------------------	---	--



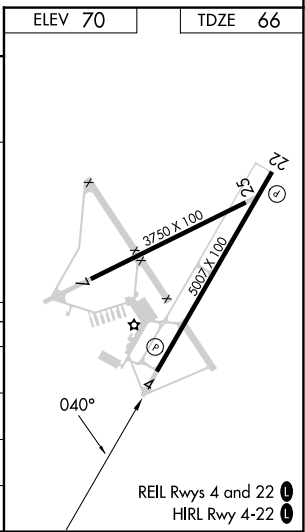
4 NM Holding Pattern

VGSI and RNAV glidepath not coincident (VGSI Angle 3.00/TCH 39).

600 2000 OLUCE



CATEGORY	A	B	C	D
LPV DA		281-3/4	215 (300-3/4)	
LNAV/VNAV DA		457-1 1/8	391 (400-1 1/8)	
LNAV MDA		440-1	374 (400-1)	
CIRCLING	500-1 430 (500-1)	560-1 490 (500-1)	680-1 3/4 610 (700-1 3/4)	680-2 610 (700-2)



NE-3, 16 APR 2026 to 14 MAY 2026

NE-3, 16 APR 2026 to 14 MAY 2026