

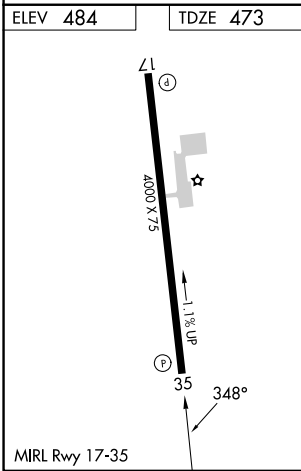
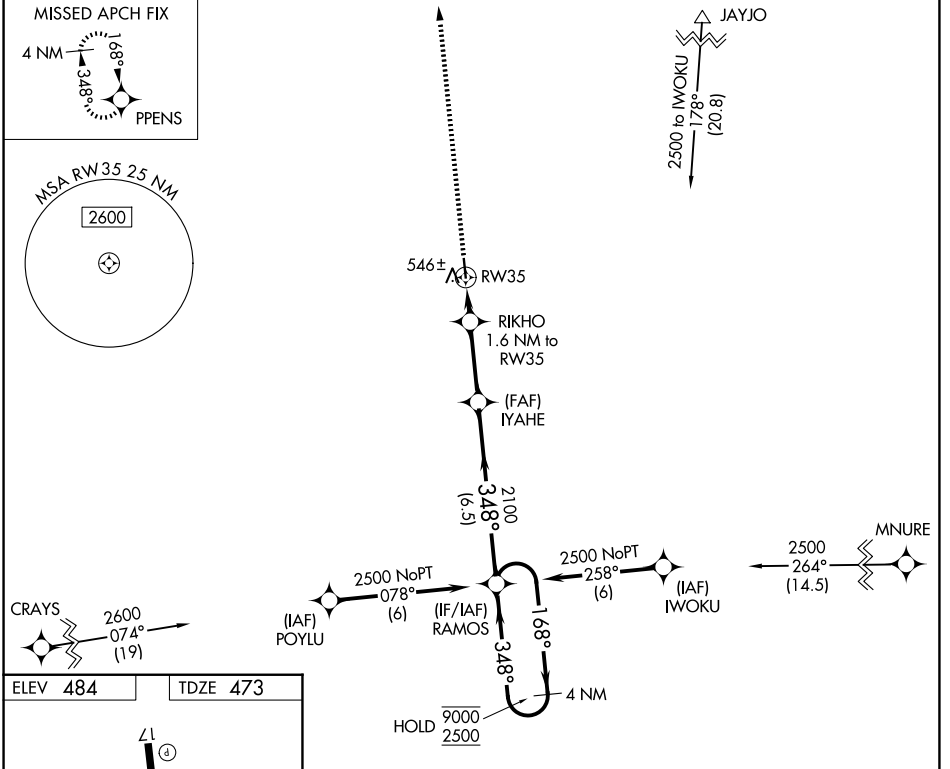
| | | |
|-------------|----------|-------------|
| APP CRS | Rwy Ldg | 4000 |
| 348° | TDZE | 473 |
| | Apt Elev | 484 |

RNAV (GPS) RWY 35

GIDDINGS-LEE COUNTY (GYB)

| | | |
|--|--|---|
| RNP APCH - GPS. | | MISSED APPROACH: Climb to 2500 direct PPENS and hold. |
| <p>▼ Rwy 35 helicopter visibility reduction below 1 SM NA. Procedure NA at night.</p> <p>▲ When local altimeter setting not received, use AUS altimeter setting and increase all MDAs 100 feet and LNAV visibility Cat C ¼ SM, and Circling visibility Cat C ¼ SM.</p> | | |

| | | |
|--------------------------|---|--------------------------------|
| AWOS-3 119.225 | AUSTIN APP CON 127.225 317.65 | UNICOM 123.05 (CTAF) |
|--------------------------|---|--------------------------------|



| | | | | |
|----------|----------------------|-----------------------------|-------------------------|--------------|
| 2500 | PPENS | Visual Segment - Obstacles. | | 4 NM |
| | | RAMOS | Holding Pattern | |
| | | RIKHO 1.6 NM to RW35 | IYAHE 2100 | 9000 2500 |
| | | RW35 | | |
| | | 1.6 NM | 2.9 NM | 6.5 NM |
| CATEGORY | A | B | C | D |
| LNAV MDA | 800-1 327 (400-1) | | | NA |
| CIRCLING | 880-1 396 (400-1) | 1160-1 676 (700-1) | 1240-2¼ 756 (800-2¼) | NA |

SC-5, 16 APR 2026 to 14 MAY 2026

SC-5, 16 APR 2026 to 14 MAY 2026