

# COPTER RNAV (GPS) X RWY 31

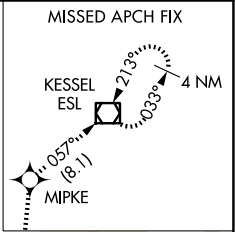
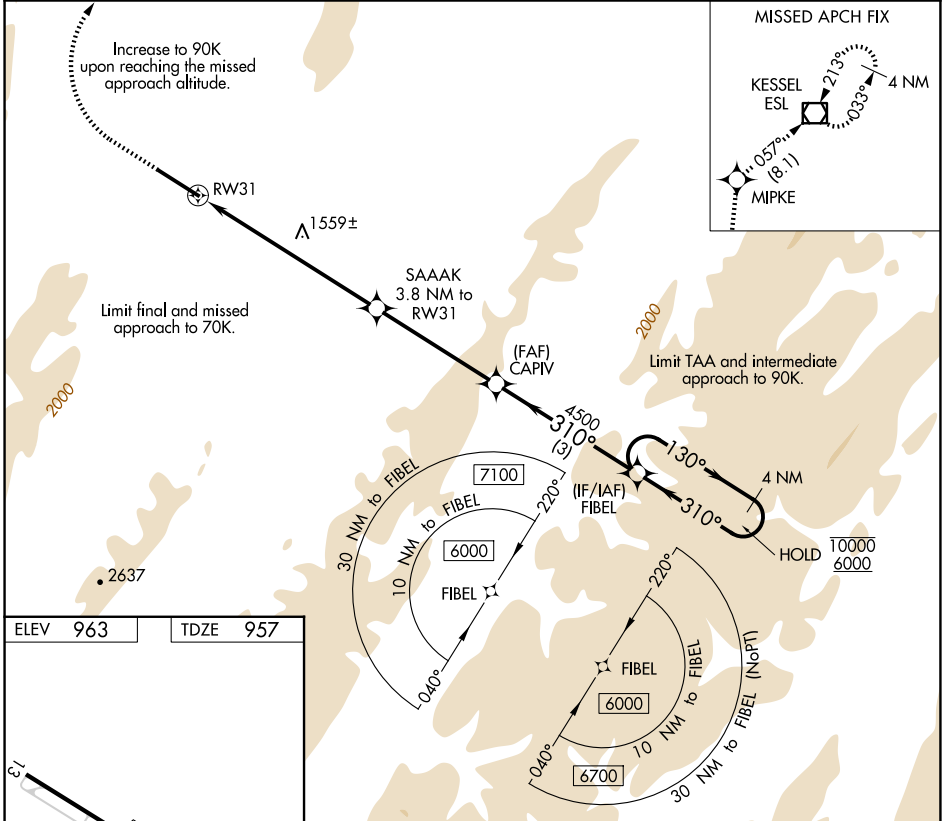
GRANT COUNTY (W99)

APP CRS	Rwy Ldg	<b>5000</b>
<b>310°</b>	TDZE	<b>957</b>
	Apt Elev	<b>963</b>

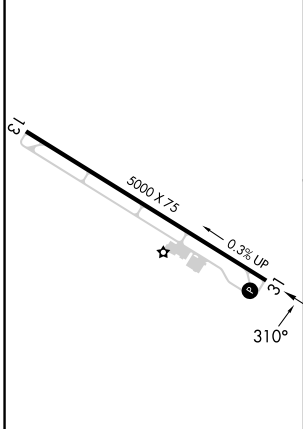
RNP APCH.	<p>When local altimeter setting not received, procedure NA.</p> <p>-7°C</p>
▼	
▲ NA	

MISSED APPROACH: Climb to 1380 then climbing right turn to 5000 direct MIPKE and on track 057° to ESL VOR/DME and hold.

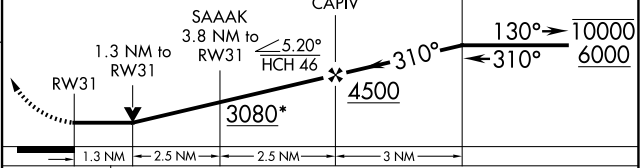
AWOS-3 <b>124.475</b>	WASHINGTON CENTER <b>133.55 322.55</b>	UNICOM <b>122.8 (CTAF)</b>
--------------------------	---	-------------------------------



ELEV 963	TDZE 957
----------	----------



1380	5000	MIPKE	tr 057°	ESL	VGSI and descent angles not coincident (VGSI Angle 6.50/TCH 46).
					FIBEL 4 NM Holding Pattern



REIL Rws 13 and 31	MIRL Rwy 13-31
CATEGORY	COPTER
LNAV MDA	1880- <sup>3</sup> / <sub>4</sub> 923 (1000- <sup>3</sup> / <sub>4</sub> )

# COPTER RNAV (GPS) X RWY 31

NE-4, 16 APR 2026 to 14 MAY 2026

NE-4, 16 APR 2026 to 14 MAY 2026