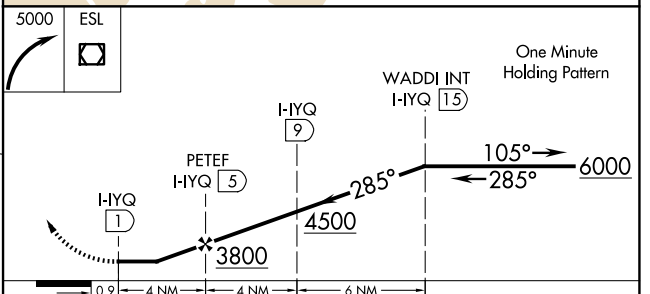
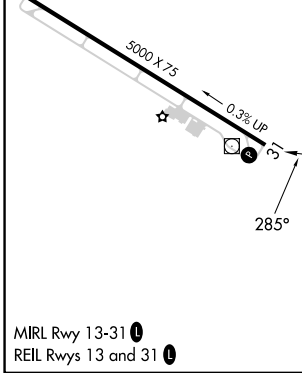
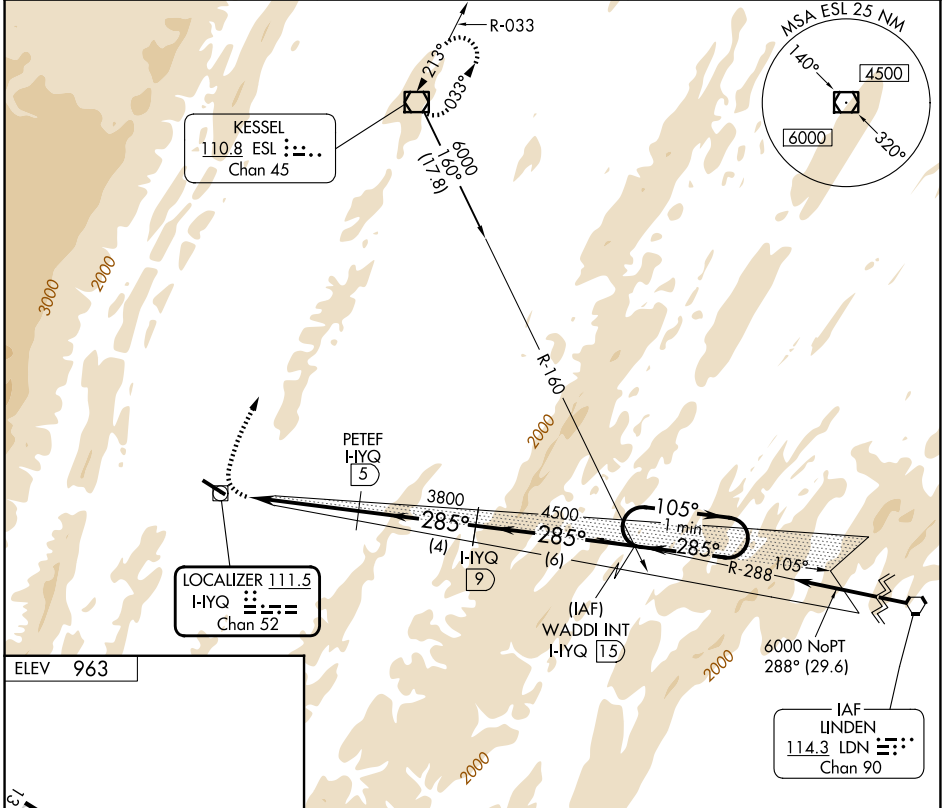


LOC HYQ 111.5 Chan 52	APP CRS 285°	Rwy Ldg TDZE Apt Elev 963	N/A N/A 963
------------------------------------	------------------------	---	--

LDA/DME-B
GRANT COUNTY (W99)

	MISSED APPROACH: Climbing right turn to 5000 direct ESL VOR/DME and hold.	
--	---	--

AWOS-3 124.475	WASHINGTON CENTER 133.55 322.55	UNICOM 122.8 (CTAF) 0
--------------------------	---	---------------------------------



CATEGORY	A	B	C	D
CIRCLING	2500-1¼ 1537 (1600-1¼)	2500-1½ 1537 (1600-1½)	2880-3 1917 (2000-3)	NA

NE-4, 16 APR 2026 to 14 MAY 2026

NE-4, 16 APR 2026 to 14 MAY 2026