

APP CRS	Rwy Ldg	N/A
145°	TDZE	N/A
	Apt Elev	963

RNAV (GPS)-C

GRANT COUNTY (W99)

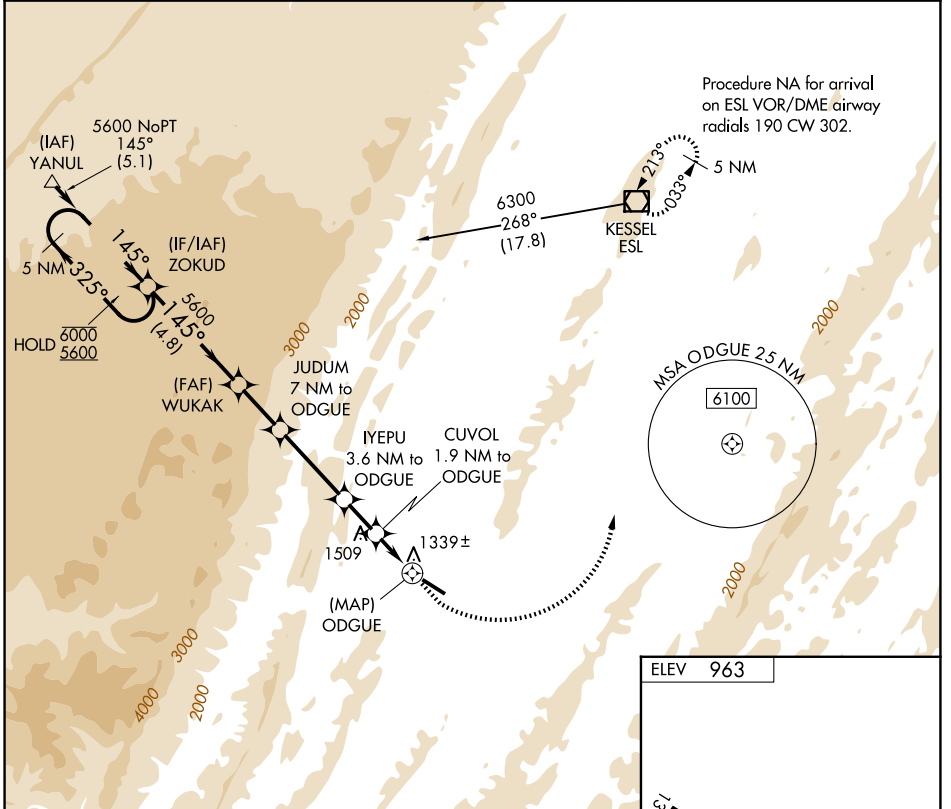
RNP APCH - GPS

⚠ When local altimeter setting not received, procedure NA.

⚠ -7°C

⚠ MISSED APPROACH: Climb to 2900 then climbing left turn to 5000 direct ESL VOR/DME and hold.

AWOS-3 124.475	WASHINGTON CENTER 133.55 322.55	UNICOM 122.8 (CTAF)
--------------------------	---	-------------------------------



NE-4, 16 APR 2026 to 14 MAY 2026

NE-4, 16 APR 2026 to 14 MAY 2026

