


LOC/DME I-JNX 111.15 Chan 48(Y)	APP CRS 032°	Rwy Ldg TDZE Apt Elev	5500 147 164
--	------------------------	-----------------------------	---

ILS Y or LOC Y RWY 3


JOHNSTON RGNL (JNX)

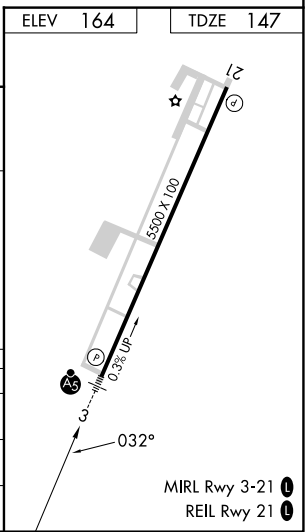
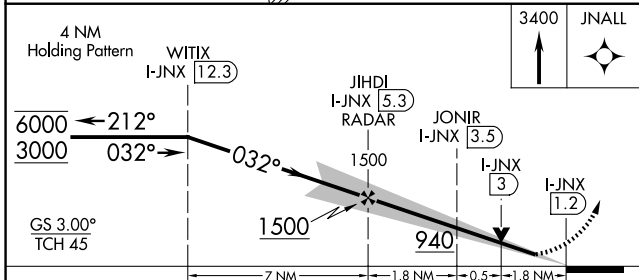
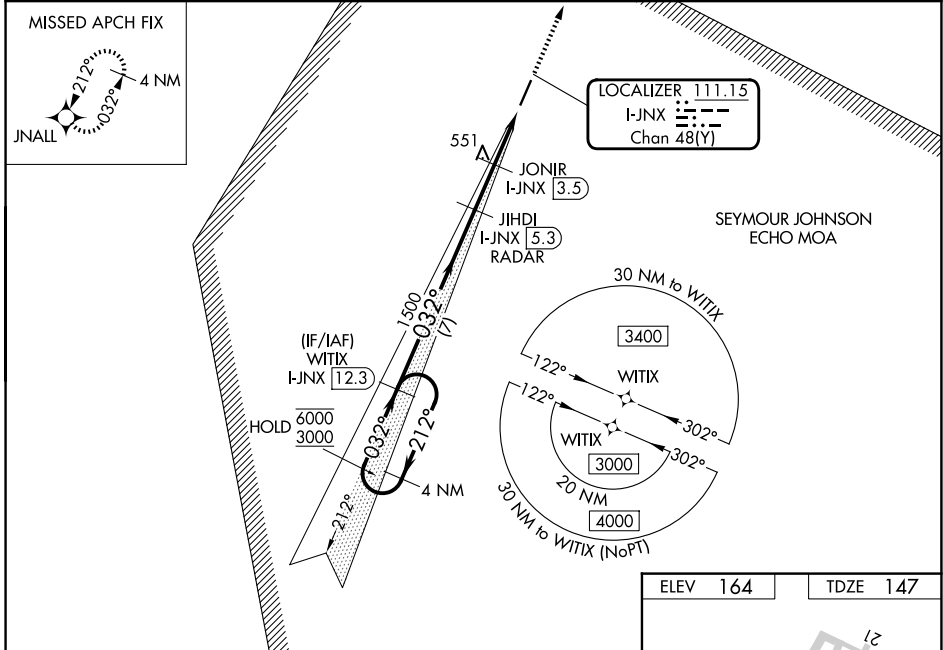
RNP APCH - GPS.

⚠ NA Rwy 3 helicopter visibility reduction below 3/4 SM NA. Inop table does not apply to S-ILS 3. VDP NA when using HRJ altimeter setting. When local altimeter setting not received, use HRJ altimeter setting and increase S-ILS 3 DA to 447 feet; increase all MDAs 60 feet and Circling visibility Cat C 1/4 SM. For inop ALS, increase S-LOC 3 Cat C/D visibility to 1/4 SM.

MALSR 

MISSED APPROACH: Climb to 3400 direct JNALL and hold, continue climb-in-hold to 3400.

AWOS-3 120.225	RALEIGH APP CON 125.3 353.675	GCO 135.075	UNICOM 122.725 (CTAF) 
--------------------------	---	-----------------------	---



CATEGORY	A	B	C	D
S-ILS 3	397-1		250 (300-1)	
S-LOC 3	780-1	633 (700-1)		780-1 ³ / ₈ 633 (700-1 ³ / ₈)
CIRCLING	780-1	616 (700-1)		960-2 ¹ / ₄ 796 (800-2 ¹ / ₄) 1100-3 936 (1000-3)

SE-2, 16 APR 2026 to 14 MAY 2026

SE-2, 16 APR 2026 to 14 MAY 2026