

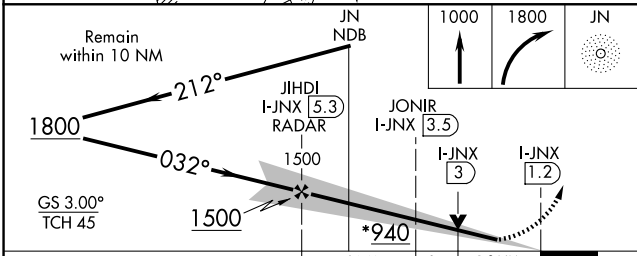
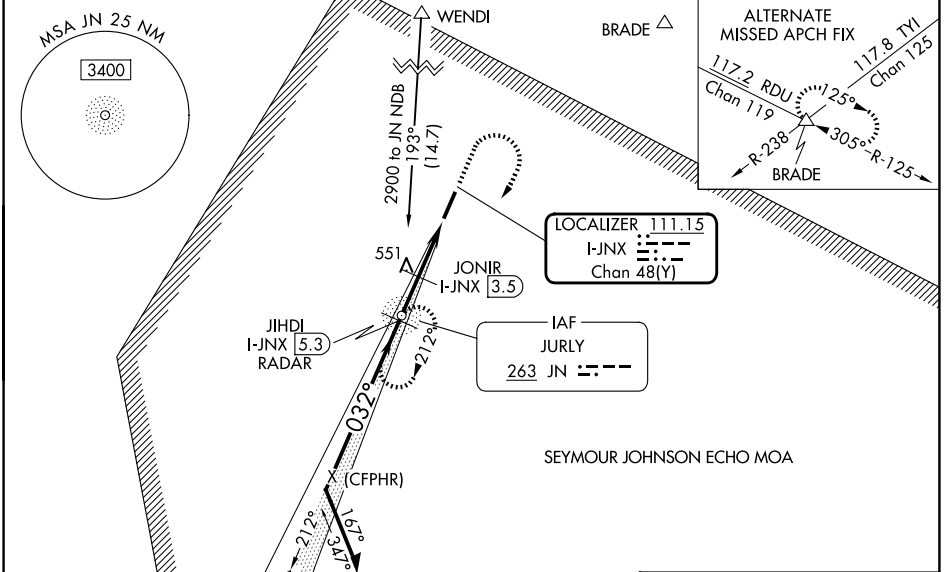
LOC/DME I-JNX 111.15 Chan 48(Y)	APP CRS 032°	Rwy Ldg TDZE Apt Elev	5500 147 164
----------------------------------------------	------------------------	-----------------------------	-----------------------------------------

ILS Z or LOC Z RWY 3

JOHNSTON RGNL (JNX)

ADF required. DME or RADAR required for LOC only.		MALSR 	MISSED APPROACH: Climb to 1000 then climbing right turn to 1800 direct JN NDB and hold, continue climb-in-hold to 1800.
<p>NA Rwy 3 helicopter visibility reduction below 3/4 SM NA. Inop table does not apply to S-ILS 3. For inop ALS, increase S-LOC 3 Cats C/D visibility to 2 1/2 ; increase S-LOC 3 JONIR Fix Minimums Cats C and D to 1 3/4 SM. When local altimeter setting not received, use HRJ altimeter setting and increase S-ILS 3 DA to 447 feet; increase all MDAs 60 feet and Circling visibility Cat A/C 1/4 SM. *1000 when using HRJ altimeter setting.</p>			

AWOS-3 120.225	RALEIGH APP CON 125.3 353.675	GCO 135.075	UNICOM 122.725 (CTAF) 0
--------------------------	-----------------------------------------	-----------------------	-----------------------------------



ELEV 164	TDZE 147
FAF to MAP 4.1 NM	
Knots	60 90 120 150 180
Min:Sec	4:06 2:44 2:03 1:38 1:22

CATEGORY	A	B	C	D
S-ILS 3		397-1	250 (300-1)	
S-LOC 3*	940-1	793 (800-1)	940-1 3/4	793 (800-1 3/4)
CIRCLING	940-1 776 (800-1)	940-1 1/4 776 (800-1 1/4)	960-2 1/2 796 (800-2 1/2)	1100-3 936 (1000-3)
JONIR DME FIX MINIMUMS				
S-LOC 3	780-1	633 (700-1)	780-1 3/8	633 (700-1 3/8)
CIRCLING	780-1	616 (700-1)	960-2 1/4 796 (800-2 1/4)	1100-3 936 (1000-3)

SE-2, 16 APR 2026 to 14 MAY 2026

SE-2, 16 APR 2026 to 14 MAY 2026