

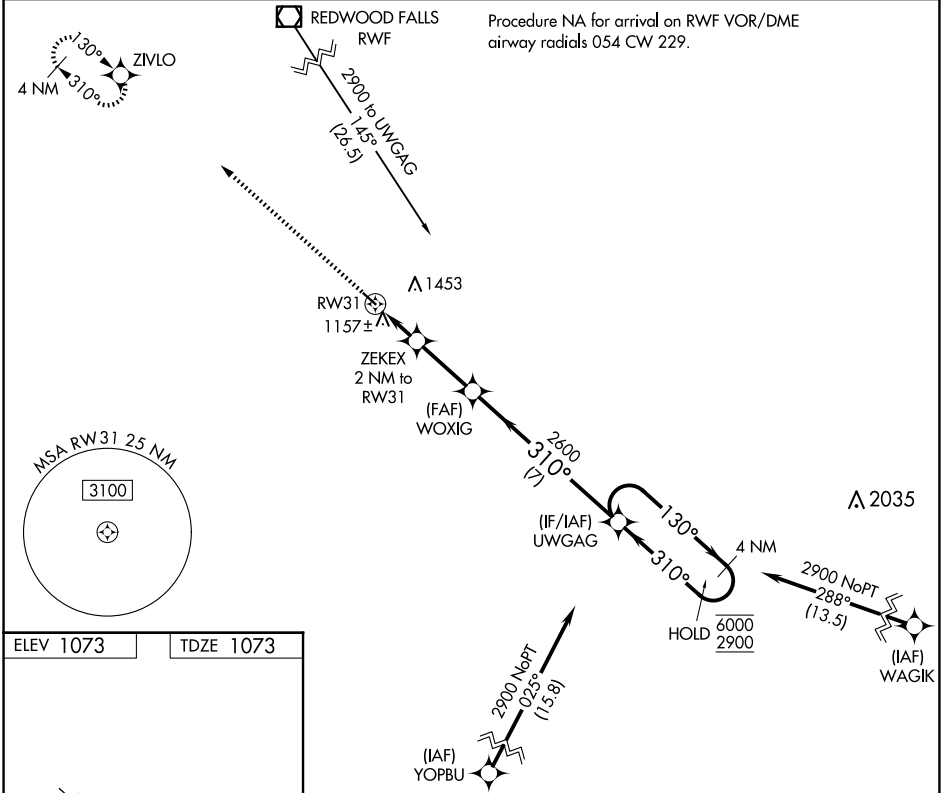
APP CRS	Rwy Idg	3402
310°	TDZE	1073
	Apt Elev	1073

RNAV (GPS) RWY 31

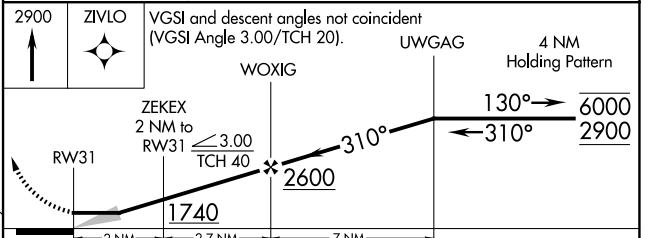
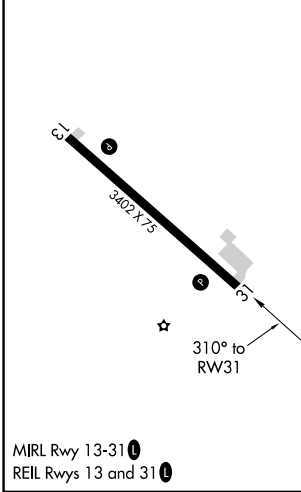
SPRINGFIELD MUNI (D42)

RNP APCH.	MISSED APPROACH: Climb to 2900 direct ZIVLO and hold.
NA Use Redwood Falls altimeter setting.	

RWF ASOS 126.575	MINNEAPOLIS CENTER 127.1 290.2	UNICOM 122.8 (CTAF) 0
----------------------------	--	---------------------------------



ELEV 1073	TDZE 1073
-----------	-----------



CATEGORY	A	B	C	D
LNAV MDA	1500-1	427 (500-1)	1500-1¼ 427 (500-1¼)	NA
CIRCLING	1660-1 587 (600-1)	1820-1 747 (800-1)	1820-2¼ 747 (800-2¼)	NA

NC-1, 16 APR 2026 to 14 MAY 2026

NC-1, 16 APR 2026 to 14 MAY 2026