

WAAS CH <b>82536</b> <b>W28A</b>	APP CRS <b>281°</b>	Rwy Ldg TDZE <b>435</b> Apt Elev <b>435</b>	<b>5010</b>
--	------------------------	---	-------------

# RNAV (GPS) RWY 28

CLAYTON MUNI (11A)

RNP APCH - GPS.

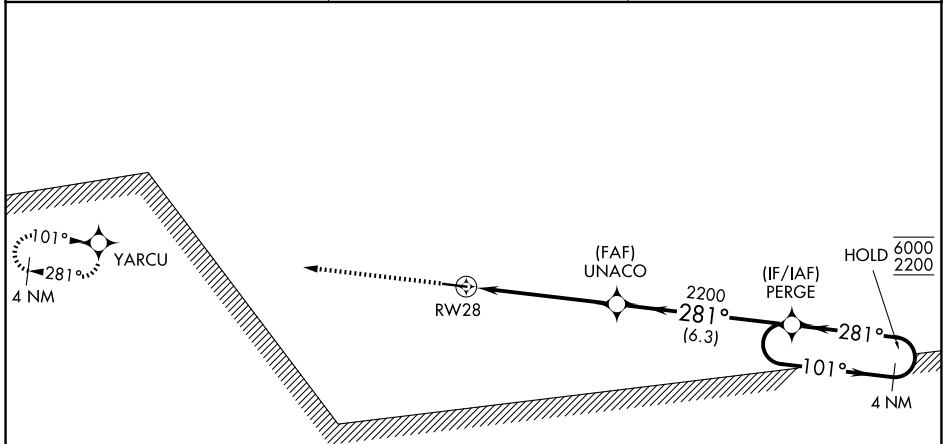
- ▼ Rwy 28 helicopter visibility reduction below 3/4 SM NA. Use Eufaula altimeter setting; when not received, use Troy altimeter setting.
- ▲ NA

MISSED APPROACH:  
Climb to 2200 direct  
YARCU and hold.

EUF ASOS  
**128.325**

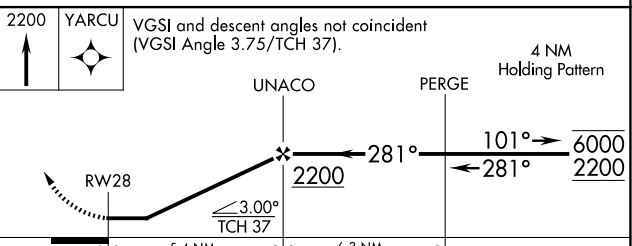
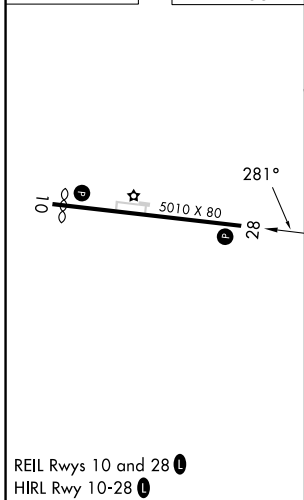
CAIRNS APP CON ★  
**121.1 319.25**

CTAF  
**122.90**



A-211

ELEV 435 TDZE 435



CATEGORY	A	B	C	D
LP MDA	1140-1	705 (800-1)	1140-2	705 (800-2)
LNAV MDA	1140-1	705 (800-1)	1140-2	705 (800-2)
CIRCLING	1180-1	745 (800-1)	1180-2 1/4 745 (800-2 1/4)	1300-2 3/4 865 (900-2 3/4)

REIL Rwy 10 and 28  
HIRL Rwy 10-28

SE-4, 16 APR 2026 to 14 MAY 2026

SE-4, 16 APR 2026 to 14 MAY 2026