

| | | | |
|--|------------------------|-----------------------------|---|
| WAAS CH 90131 W10A | APP CRS 097° | Rwy Idg TDZE Apt Elev | 3400 1236 1238 |
|--|------------------------|-----------------------------|---|

RNAV (GPS) RWY 10

NEILLSVILLE MUNI (VIQ)

Baro-VNAV NA. DME/DME RNP-0.3 NA. Helicopter visibility reduction below 3/4 SM NA. Use Marshfield altimeter setting; when not received, use Wisconsin Rapids altimeter setting and increase all DA 63 feet and all MDA 80 feet. Increase LPV and LNAV/VNAV Cats A/B visibility 1/4 mile.

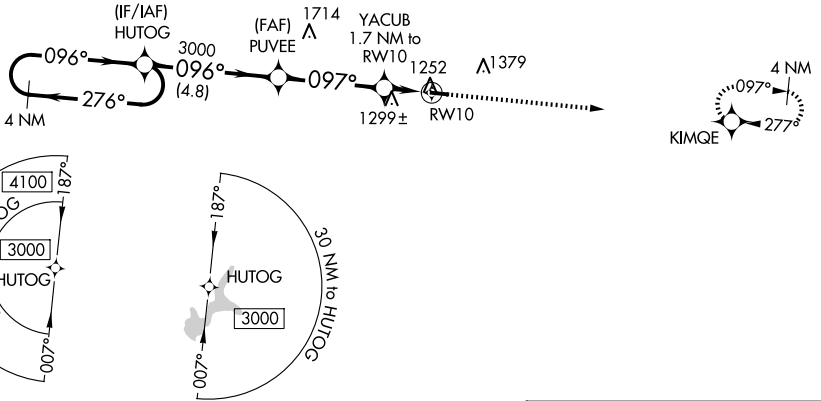
MISSED APPROACH: Climb to 3000 direct KIMQE and hold.

MFI ASOS
121.575

MINNEAPOLIS CENTER
124.4 317.7

UNICOM
122.8 (CTAF) 0

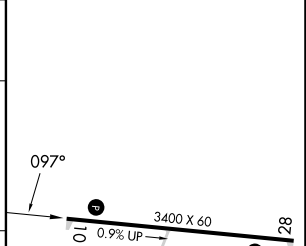
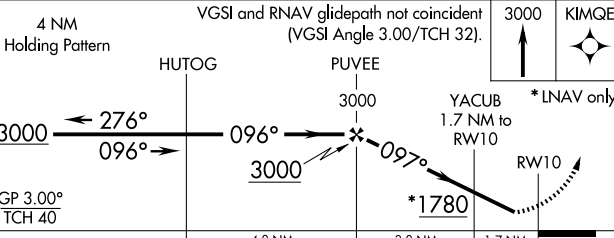
3095



EC-3, 16 APR 2026 to 14 MAY 2026

EC-3, 16 APR 2026 to 14 MAY 2026

| | |
|-----------|-----------|
| ELEV 1238 | TDZE 1236 |
|-----------|-----------|



| CATEGORY | A | B | C | D |
|--------------|--------|-------------|---|----|
| LPV DA | 1526-1 | 290 (300-1) | | NA |
| LNAV/VNAV DA | 1526-1 | 290 (300-1) | | NA |
| LNAV MDA | 1600-1 | 364 (400-1) | | NA |
| CIRCLING | 1720-1 | 482 (500-1) | | NA |

| |
|------------------|
| LIRL Rwy 10-28 0 |
|------------------|