

WAAS CH 90222 W03A	APP CRS 032°	Rwy Idg TDZE Apt Elev	4000 756 756
--	------------------------	-----------------------------	---

RNAV (GPS) RWY 3

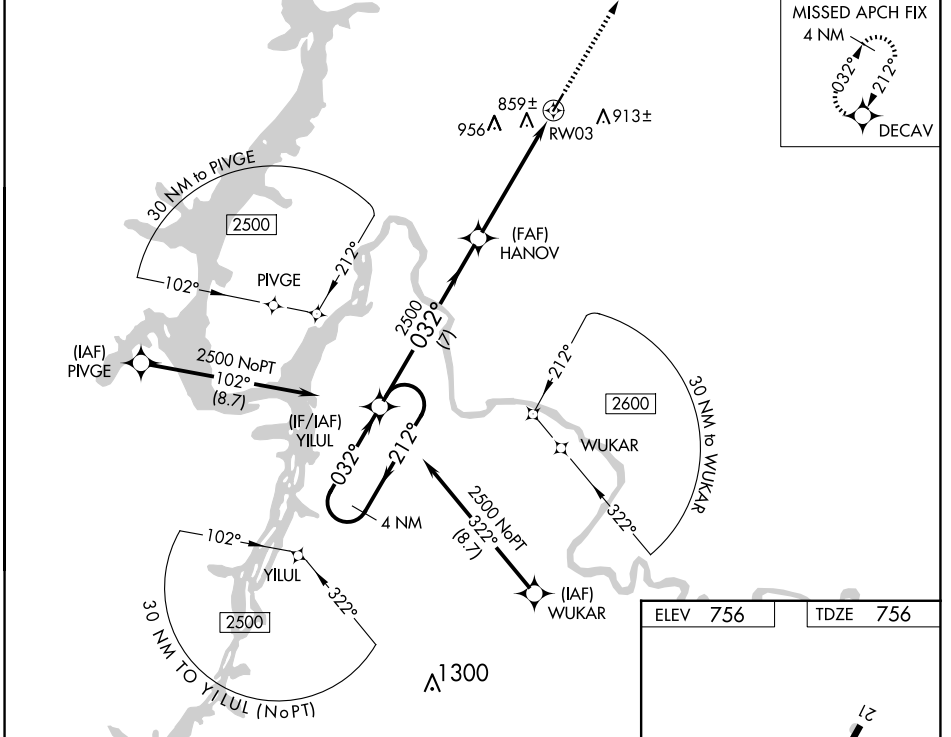
HUMPHREYS COUNTY (ØM5)

RNP APCH.

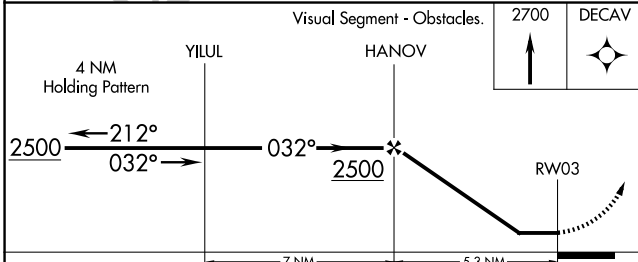
▼ When local altimeter setting not received, use Nashville Intl altimeter setting and increase all MDA 160 feet; increase LP Cat C and D visibility 3/8 mile, LNAV Cat C and D visibility 1/2 mile. Procedure NA at night. Rwy 3 helicopter visibility reduction below 1 SM NA.

▲ NA MISSED APPROACH: Climb to 2700 direct DECAV and hold.

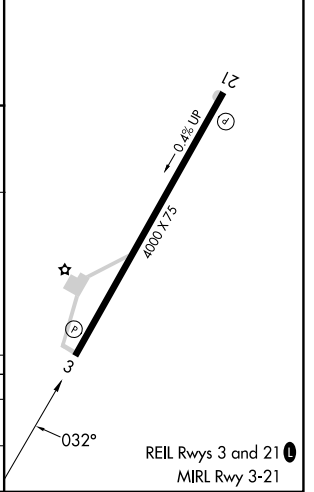
MEMPHIS CENTER 125.85 379.25	UNICOM 122.8 (CTAF) 0
--	---------------------------------



ELEV 756	TDZE 756
----------	----------



CATEGORY	A	B	C	D
LP MDA		1100-1	344 (400-1)	
LNAV MDA		1120-1	364 (400-1)	



SE-1, 16 APR 2026 to 14 MAY 2026

SE-1, 16 APR 2026 to 14 MAY 2026