

WAAS CH 60929 W29A	APP CRS 289°	Rwy Ldg TDZE Apt Elev	6000 308 310
--	------------------------	-----------------------------	---

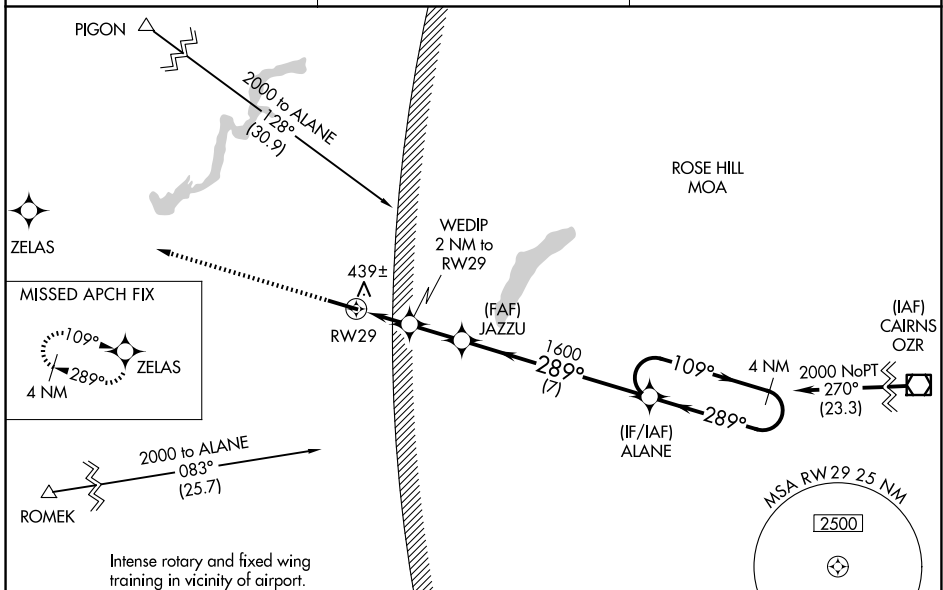
RNAV (GPS) RWY 29

SOUTH ALABAMA RGNL AT BILL BENTON FLD (79J)

⚠ For uncompensated Baro-VNAV systems, LNAV/VNAV NA below -15°C (5°F) or above 54°C (130°F). DME/DME RNP-0.3 NA. Helicopter visibility reduction below 3/4 SM NA. When local altimeter setting not received, use Cairns AAF (Fort Rucker) altimeter setting and increase all DA 82 feet, all MDA 100 feet. Increase LPV and LNAV/VNAV visibilities 3/8 mile, LNAV and Circling Cat C and D 1/4 mile. Baro-VNAV and VDP NA when using Cairns AAF (Fort Rucker) altimeter setting.

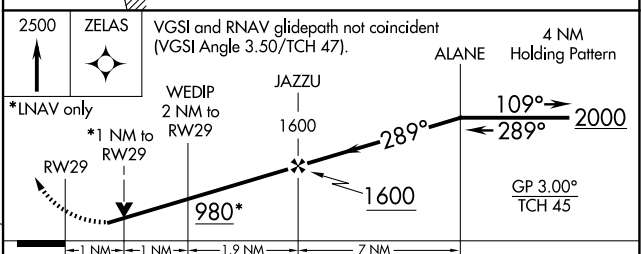
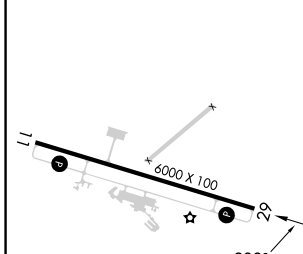
MISSED APPROACH: Climb to 2500 direct ZELAS and hold.

ASOS 134.875	CAIRNS APP CON ★ 133.45 239.275	UNICOM 123.05 (CTAF) 0
------------------------	---	----------------------------------



ELEV 310 TDZE 308

Intense rotary and fixed wing training in vicinity of airport.



CATEGORY	A	B	C	D
LPV DA	630-1		322 (400-1)	
LNAV/VNAV DA	628-1		320 (400-1)	
LNAV MDA	720-1	412 (500-1)	720-1 1/8	412 (500-1 1/8)
CIRCLING	820-1	510 (600-1)	860-1 1/2 550 (600-1 1/2)	940-2 630 (700-2)

MIRL Rwy 11-29 0
REIL Rwy 11 and 29

SE-4, 16 APR 2026 to 14 MAY 2026

SE-4, 16 APR 2026 to 14 MAY 2026