

APP CRS	Rwy Idg	5003
235°	TDZE	1458
	Apt Elev	1458

RNAV (GPS) RWY 24

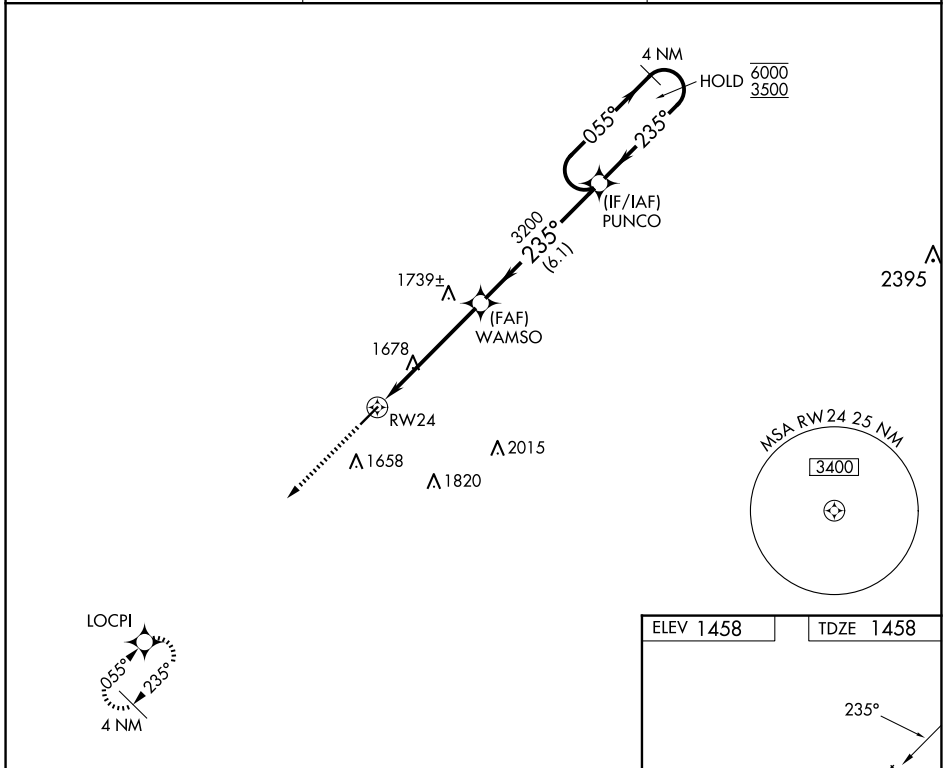
CLARION COUNTY (AXQ)

RNP APCH.

⚠ **NA** Rwy 24 helicopter visibility reduction below 3/4 SM NA. VDP NA when using Dubois altimeter setting. When local altimeter setting not received, use Dubois altimeter setting and increase all MDA 120 feet and LNAV Cat B/C/D and Circling Cat C visibility 5/8 SM, Circling Cat B visibility 1/4 SM, Cat D visibility 1/2 SM.

MISSED APPROACH:
Climb to 3100 direct
LOCPI and hold.

AWOS-3 118.275	CLEVELAND CENTER 126.725 291.65	UNICOM 122.8 (CTAF) 0
--------------------------	---	---------------------------------



NE-4, 16 APR 2026 to 14 MAY 2026

NE-4, 16 APR 2026 to 14 MAY 2026

