

WAAS CH <b>72647</b> <b>W35A</b>	APP CRS <b>353°</b>	Rwy Ldg TDZE Apt Elev	<b>4001</b> <b>1547</b> <b>1551</b>
--	------------------------	-----------------------------	---

# RNAV (GPS) RWY 35

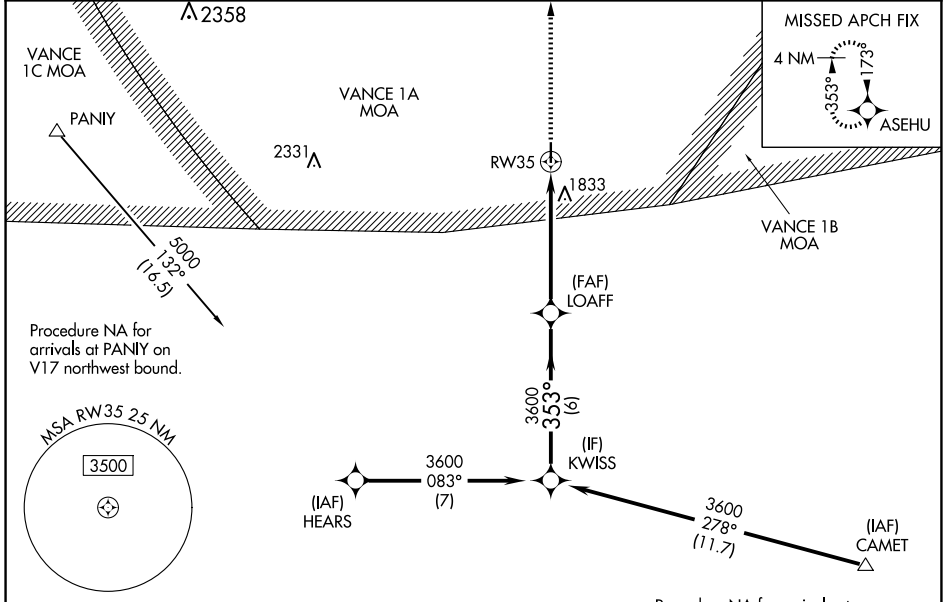
WATONGA RGNL (JWG)

RNP APCH - GPS.

⚠ For uncompensated Baro-VNAV systems, LNAV/VNAV NA below -18°C or above 54°C. Baro-VNAV and VDP NA when using CLK altimeter setting. Rwy 35 helicopter visibility reduction below 3/4 SM NA. When local altimeter setting not received, use CLK altimeter setting and increase LPV DA to 1903 feet and all visibilities 1/2 SM. Increase LNAV/VNAV DA to 2186 feet and all visibilities 1/2 SM. Increase all MDAs 100 feet and LNAV visibility Cat C 1/4 SM, and Circling visibility Cat C 3/8 SM.

MISSED APPROACH:  
Climb to 4000 direct  
ASEHU and hold.

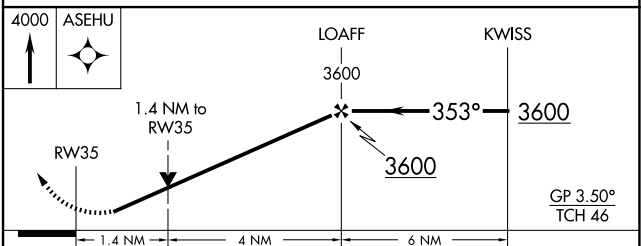
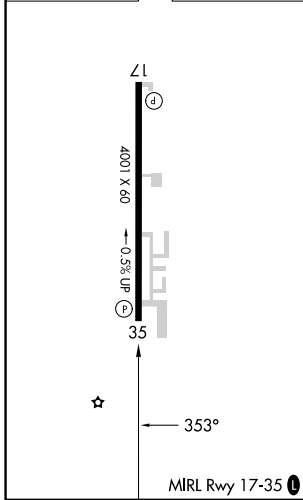
AWOS-3 <b>134.175</b>	VANCE APP CON ★ <b>126.75 346.325</b>	UNICOM <b>122.8 (CTAF) 0</b>
--------------------------	--	---------------------------------



SC-1, 16 APR 2026 to 14 MAY 2026

SC-1, 16 APR 2026 to 14 MAY 2026

ELEV 1551	TDZE 1547
-----------	-----------



CATEGORY	A	B	C	D
LPV DA	1817-7/8	270 (300-3/4)		NA
LNAV/VNAV DA	2100-1 1/8	553 (600-1 1/8)		NA
LNAV MDA	2100-1	553 (600-1)	2100-1 1/8 (600-1 1/8)	NA
CIRCLING	2100-1 (549 (600-1))	2140-1 (589 (600-1))	2140-1 1/8 (589 (600-1 1/8))	NA