

WAAS CH 45918 W13A	APP CRS 128°	Rwy Ldg TDZE Apt Elev	5003 661 663
--	------------------------	-----------------------------	---

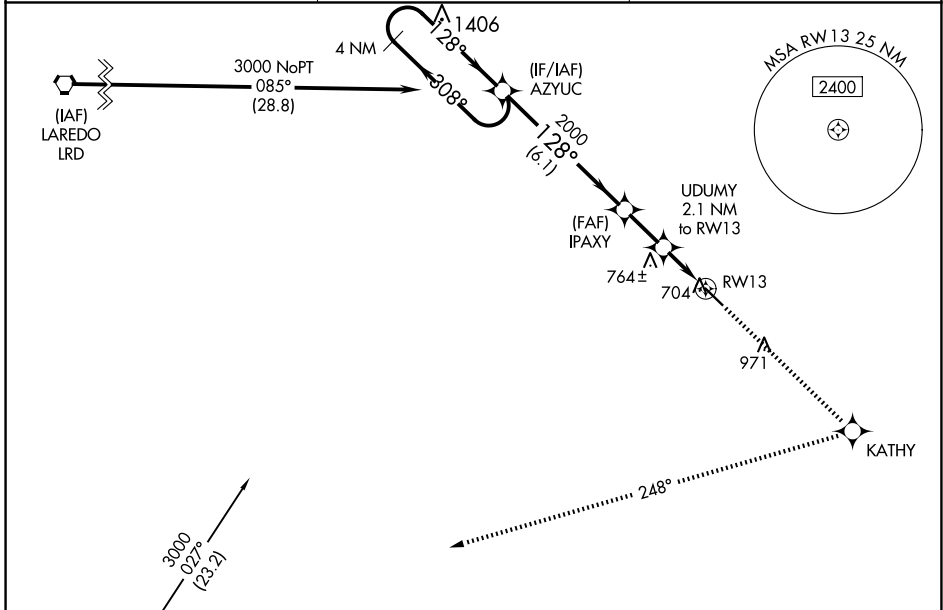
RNAV (GPS) RWY 13

JIM HOGG COUNTY (HBV)

▼ Baro-VNAV NA when using Laredo altimeter setting. For uncompensated Baro-VNAV systems, LNAV/VNAV NA below -16°C (4°F) or above 54°C (130°F). DME/DME RNP-0.3 NA.
 ▲ Visibility reduction by helicopters NA. When local altimeter setting not received, use Laredo altimeter setting: increase LPV DA to 1026 feet and all visibilities ¼ SM; increase LNAV/VNAV DA to 1089 feet and all visibilities ½ SM; increase all MDAs 120 feet and increase LNAV Cat C and Circling Cat C visibility ¼ SM. VDP NA with Laredo altimeter setting.

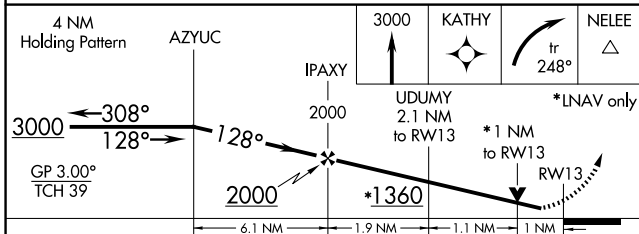
MISSED APPROACH: Climb to 3000 direct KATHY and right turn on track 248° to NELEE and hold

AWOS-3PT 118.075	HOUSTON CENTER 127.8 307.2	UNICOM 122.8 (CTAF) 0
----------------------------	--------------------------------------	---------------------------------

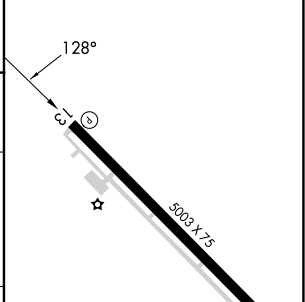


SC-3, 16 APR 2026 to 14 MAY 2026

SC-3, 16 APR 2026 to 14 MAY 2026



ELEV 663	TDZE 661
----------	----------



CATEGORY	A	B	C	D
LPV DA	911-1	250 (300-1)		NA
LNAV/VNAV DA	974-1	313 (400-1)		NA
LNAV MDA	1020-1	359 (400-1)		NA
CIRCLING	1040-1 377 (400-1)	1120-1 457 (500-1)	1280-1¼ 617 (700-1¼)	NA

