

WAAS CH 77724 W31A	APP CRS 305°	Rwy Idg 4000 TDZE 261 Apt Elev 264
--	------------------------	---

RNAV (GPS) RWY 31

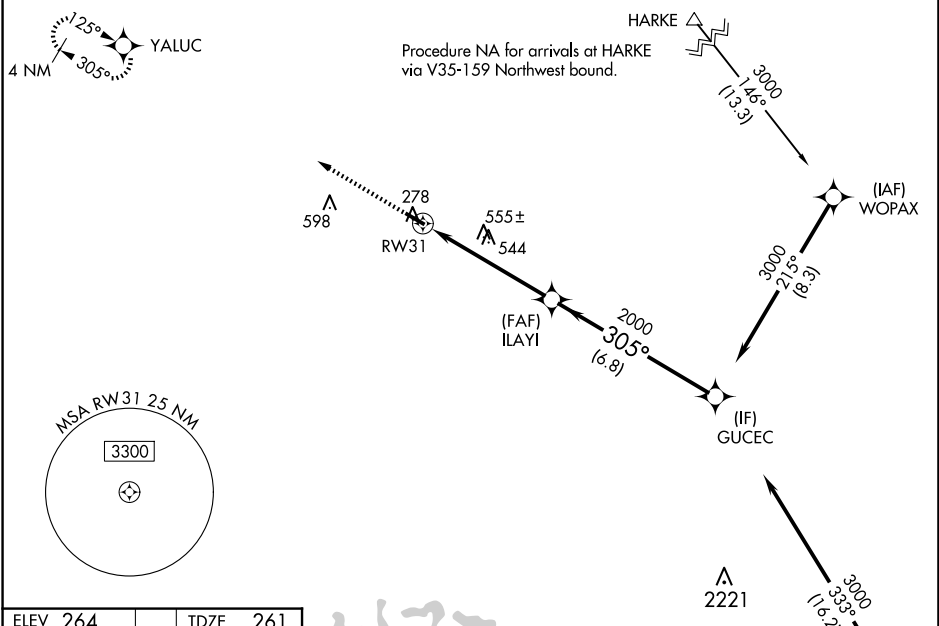
CAIRO-GRADY COUNTY (70J)

▼ Baro-VNAV NA. For uncompensated Baro-VNAV systems, LNAV/VNAV NA below -15°C (5°F) or above 42°C (107°F). DME/DME RNP-0.3 NA. Visibility reduction by helicopters NA.
▲ NA Use Moultrie altimeter setting, when not received, use Tallahassee Intl altimeter setting and increase LPV DA to 609, LNAV/VNAV DA to 653, and all MDA 60 feet; increase LPV and LNAV/VNAV all Cats and LNAV Cats C/D visibility 1/8 SM and increase Circling Cats C/D visibility 1/4 SM.

MISSED APPROACH:
Climb to 3000 direct YALUC and hold.

TALLAHASSEE APP CON*
128.7 254.3

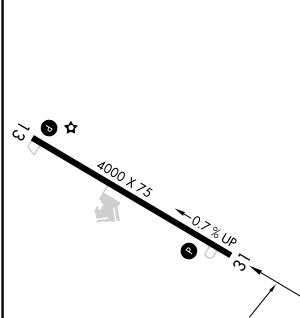
UNICOM
122.7 (CTAF)



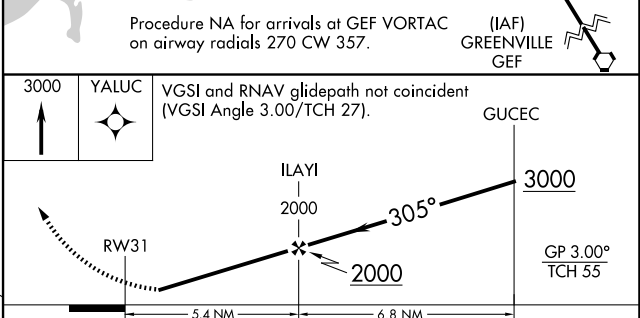
SE-4, 16 APR 2026 to 14 MAY 2026

SE-4, 16 APR 2026 to 14 MAY 2026

ELEV 264	TDZE 261
----------	----------



MIRL Rwy 13-31



CATEGORY	A	B	C	D
LPV DA	565-1 304 (300-1)			
LNAV/VNAV DA	609-1 348 (400-1)			
LNAV MDA	900-1	639 (700-1)	900-1 639 (700-1)	639 (700-1)
CIRCLING	900-1	636 (700-1)	1020-2 756 (800-2)	1020-2 756 (800-2)