

LOC I-HNZ <b>109.75</b>	APP CRS <b>060°</b>	Rwy Ldg TDZE Apt Elev	<b>5501</b> <b>526</b> <b>526</b>
----------------------------	------------------------	-----------------------------	---

# LOC RWY 6

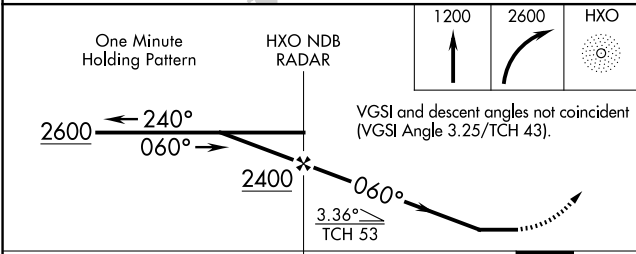
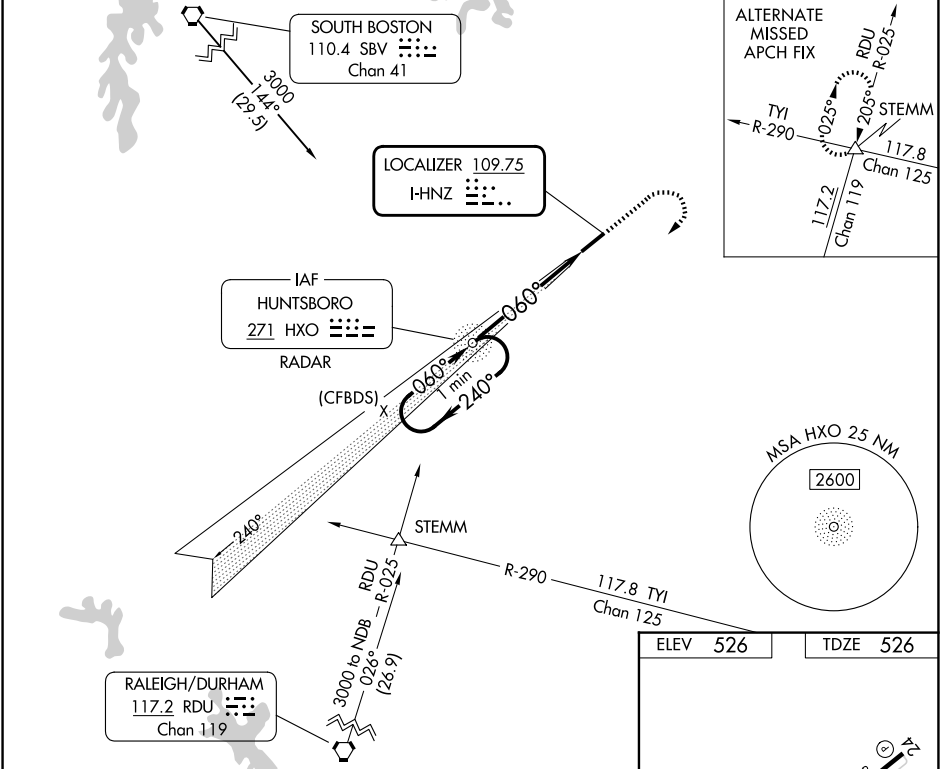
HENDERSON/OXFORD (HNZ)

ADF or RADAR required. ADF or RADAR required for procedure entry.

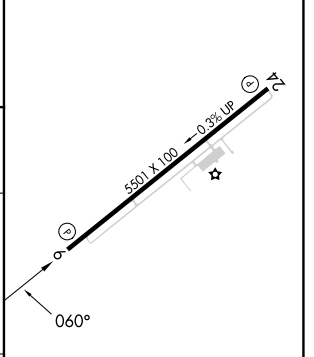
**▼** Rwy 6 helicopter visibility reduction below ¼ SM NA. When local altimeter setting not received, use Roxboro altimeter setting and increase all MDA 80 feet; increase S-6 Cat C/D visibility ½ SM and Circling Cat C and D visibility ¼ SM.

MISSED APPROACH: Climb to 1200 then climbing right turn to 2600 direct HXO NDB/RADAR and hold.

AWOS-3 <b>118.625</b>	RALEIGH APP CON <b>132.35 256.9</b>	UNICOM <b>122.8 (CTAF) 0</b>
--------------------------	--	---------------------------------



ELEV 526	TDZE 526
----------	----------



CATEGORY	A	B	C	D
S-6	980-1	454 (500-1)	980-1 3/8	454 (500-1 3/8)
CIRCLING	980-1	454 (500-1)	1100-1 1/2 574 (600-1 1/2)	1280-2 1/2 754 (800-2 1/2)

Knots					60	90	120	150	180
Min:Sec					5:12	3:28	2:36	2:05	1:44

SE-2, 16 APR 2026 to 14 MAY 2026

SE-2, 16 APR 2026 to 14 MAY 2026