

(TJANO2.TJANO) 25219

AL-6552 (FAA)

CASTROVILLE MUNI (CVB)  
CASTROVILLE, TEXAS

# TJANO TWO DEPARTURE (RNAV)

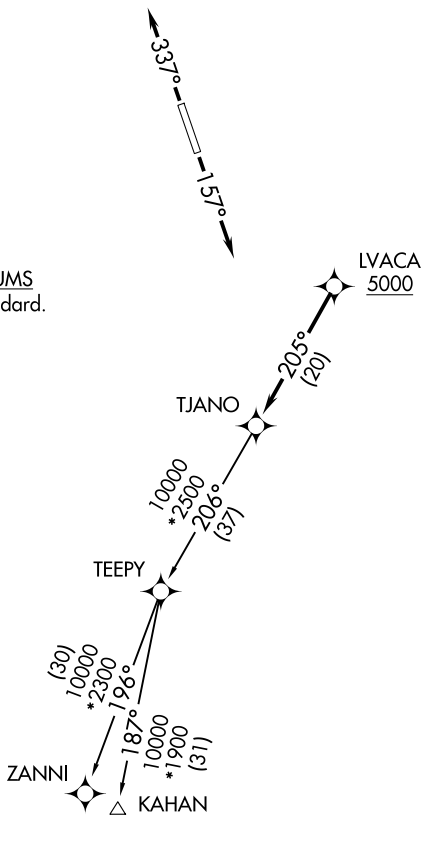
SAN ANTONIO DEP CON  
118.05 353.5

RNAV 1 - DME/DME IRU or GPS.

RADAR required for non-GPS equipped aircraft.  
RADAR required.

**TOP ALTITUDE:  
ASSIGNED BY ATC**

TAKEOFF MINIMUMS  
Rwys 16, 34: Standard.



NOTE: Chart not to scale.

## DEPARTURE ROUTE DESCRIPTION

TAKEOFF RUNWAY 16: Climb on heading 157° or as assigned by ATC, for vectors to LVACA, thence. . .

TAKEOFF RUNWAY 34: Climb on heading 337° or as assigned by ATC, for vectors to LVACA, thence. . .

. . .on track 205° to TJANO, then on transition. Maintain ATC assigned altitude. Expect filed altitude 10 minutes after departure.

KAHAN TRANSITION (TJANO2.KAHAN)

ZANNI TRANSITION (TJANO2.ZANNI)

TJANO TWO DEPARTURE (RNAV)  
(TJANO2.TJANO) 07AUG25

CASTROVILLE, TEXAS  
CASTROVILLE MUNI (CVB)

SC-3, 16 APR 2026 to 14 MAY 2026

SC-3, 16 APR 2026 to 14 MAY 2026