

ORANGE GROVE, TEXAS

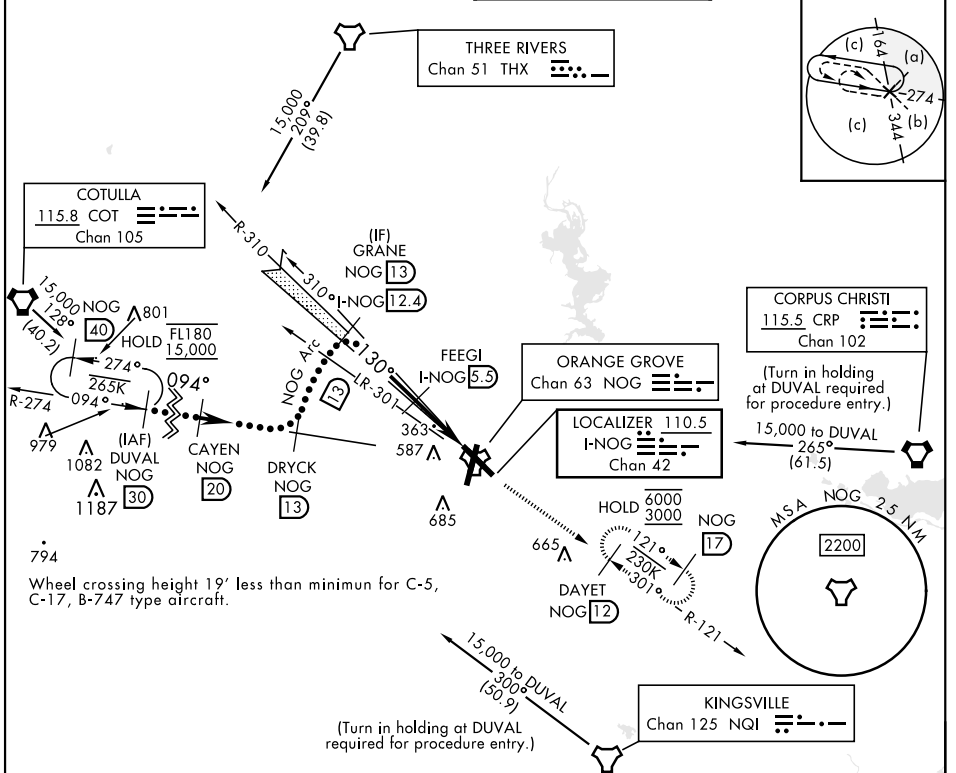
HI-ILS Y or LOC Y RWY 13

LOC/DME I-NOG 110.5 Chan 42	APCH CRS 130°	Rwy Idg TDZE Arprt Elev 8001 257 257	[USN]	ORANGE GROVE NALF (KNOG)
---	-------------------------	--	-------	--------------------------

TACAN, DME required.

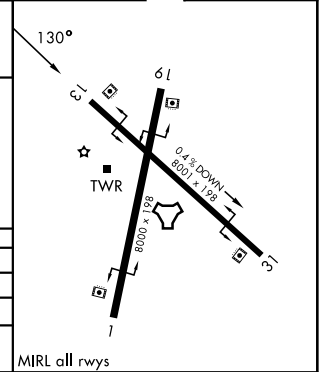
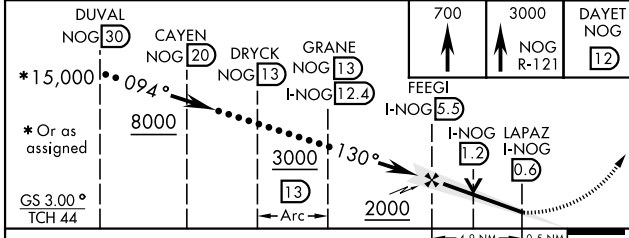
MISSED APPROACH: Climb to 700 then climbing to 3000 intercept NOG TACAN R-121 to DAYET and hold.

ATIS ★ 254.35	KINGSVILLE APP CON 119.90 290.45	TOWER ★ 128.4 281.425	GND CON 229.4
-------------------------	--	---------------------------------	-------------------------



EMERG SAFE ALT 100 NM 16,200

ELEV	257	TDZE	257
------	-----	------	-----



CATEGORY	C	D	E
S-ILS 13	457-1	200 (200-1)	
S-LOC 13	620-1	363 (400-1)	
CIRCLING	920-1¾ 663 (700-1¾)	1000-2½ 743 (800-2½)	1000-2¾ 743 (800-2¾)

ORANGE GROVE, TEXAS 27°54'N-98°03'W ORANGE GROVE NALF (KNOG)

Amdt 1 13JUN24

HI-ILS Y or LOC Y RWY 13

SC-3, 16 APR 2026 to 14 MAY 2026

SC-3, 16 APR 2026 to 14 MAY 2026