

ORANGE GROVE, TEXAS

TACAN RWY 31

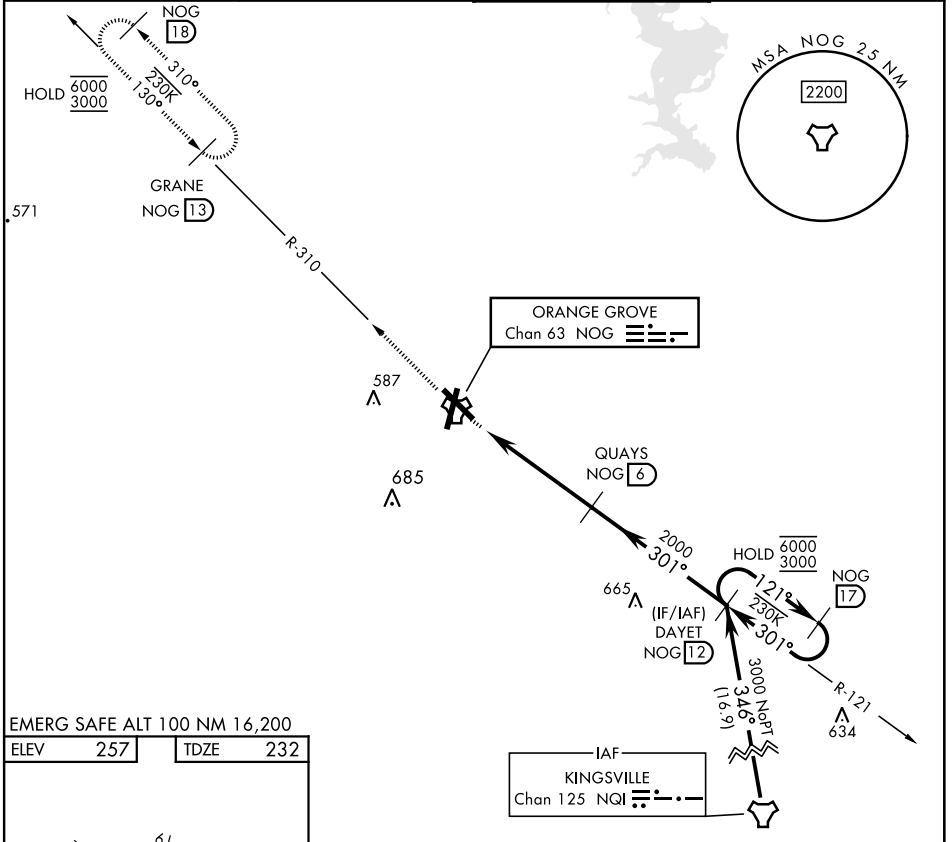
TACAN Chan 63	APCH CRS 301°	Rwy Idg TDZE Arprt Elev	8001 232 257
-------------------------	-------------------------	-------------------------------	---

[USN]

ORANGE GROVE NALF (KNOG)

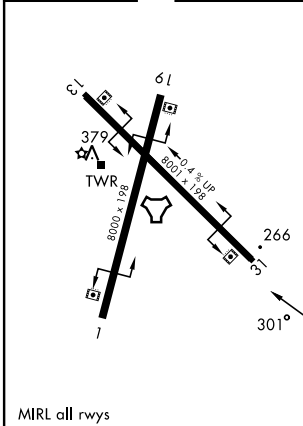
MISSED APPROACH: Climb to 700 then climb to 3000 intercept NOG TACAN R-310 to GRANE and hold.

ATIS ★ 254.35	KINGSVILLE APP CON 119.90 290.45	TOWER ★ 128.4 281.425	GND CON 229.4
-------------------------	--	---------------------------------	-------------------------



EMERG SAFE ALT 100 NM 16,200

ELEV	257	TDZE	232
------	-----	------	-----



	700	3000	GRANE NOG 13	DAYET NOG 12	NOG 17
	↑	↻			
	NOG TACAN	PEKEE NOG 11	QUAYS NOG 6		
		3.01°	2000	121°	6000
	0.5	4.9 NM		301°	3000
CATEGORY	A		B	C	D
S-31	520-1		288	(300-1)	
CIRCLING	720-1	463 (500-1)	920-1¾ 663 (700-1¾)	1000-2½ 743 (800-2½)	

ORANGE GROVE, TEXAS

27°54'N-98°03'W

ORANGE GROVE NALF (KNOG)

Amdt 2 13JUN24

TACAN RWY 31

SC-3, 16 APR 2026 to 14 MAY 2026

SC-3, 16 APR 2026 to 14 MAY 2026