

WAAS CH 63107 W17A	APP CRS 175°	Rwy Ldg TDZE Apt Elev	4201 1500 1500
---------------------------------	------------------------	-----------------------------	---

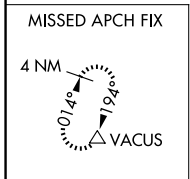
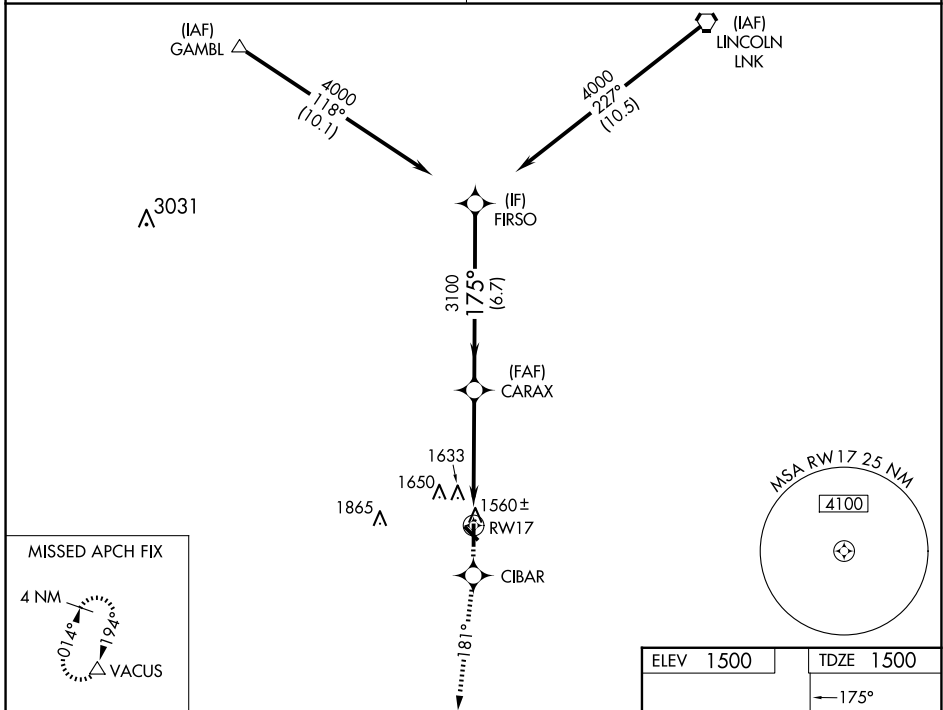
RNAV (GPS) RWY 17

CRETE MUNI (CEK)

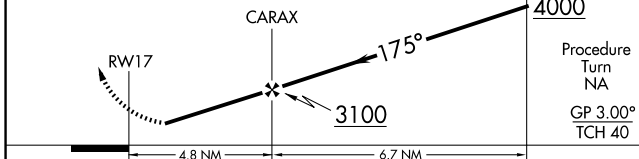
NA Baro-VNAV NA. DME/DME RNP-0.3 NA. Visibility reduction by helicopters NA. Use Lincoln altimeter setting; when not received, use Beatrice altimeter setting.

MISSED APPROACH: Climb to 4000 direct CIBAR and via 181° track to VACUS and hold, continue climb-in-hold to 4000.

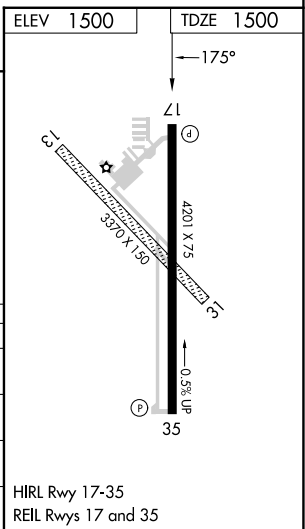
OMAHA APP CON 124.0 270.3	UNICOM 122.8 (CTAF)
-------------------------------------	-------------------------------



4000	CIBAR	fr 181°	VACUS	VGSI and RNAV glidepath not coincident (VGSI Angle 3.00/TCH 40).	FIRSO
------	-------	---------	-------	--	-------



CATEGORY	A	B	C	D
LPV DA	1875-1¼	375 (400-1¼)		NA
LNAV/VNAV DA	2051-2	551 (600-2)		NA
LNAV MDA	2080-1	580 (600-1)		NA
CIRCLING	2140-1	640 (700-1)		NA



NC-2, 16 APR 2026 to 14 MAY 2026

NC-2, 16 APR 2026 to 14 MAY 2026