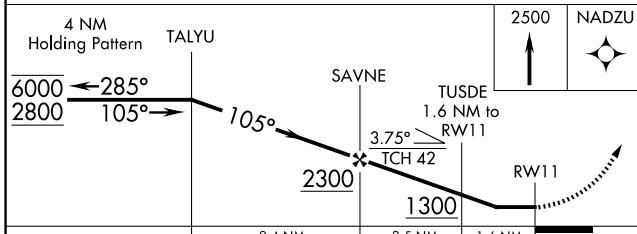
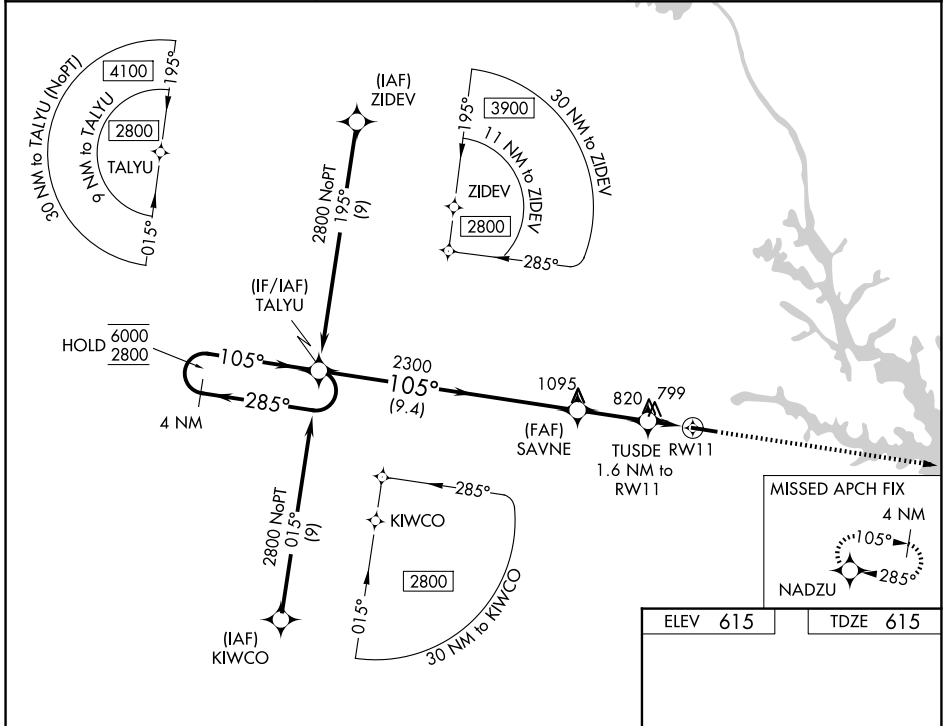


WAAS CH 56346 W11A	APP CRS 105°	Rwy Ldg 5004 TDZE 615 Apt Elev 615
--	------------------------	---

RNAV (GPS) RWY 11

ELBERT COUNTY-PATZ FLD (EBA)

RNP APCH - GPS.		MISSED APPROACH: Climb to 2500 direct NADZU and hold.
<p>⚠ Procedure NA at night. Rwy 11 helicopter visibility reduction below 1 SM NA.</p>		
AWOS-3 118.15	ATLANTA CENTER 127.5 316.05	UNICOM 122.8 (CTAF) 1



ELEV 615	TDZE 615
----------	----------

MIRL RWY 11-29 1

CATEGORY	A	B	C	D
LP MDA	1060-1	445 (500-1)	1060-1 $\frac{3}{8}$ 445 (500-1 $\frac{3}{8}$)	NA
LNAV MDA	1120-1	505 (600-1)	1120-1 $\frac{3}{8}$ 505 (600-1 $\frac{3}{8}$)	NA
CIRCLING	1160-1	545 (600-1)	1280-1 $\frac{3}{4}$ 665 (700-1 $\frac{3}{4}$)	NA

SE-4, 16 APR 2026 to 14 MAY 2026

SE-4, 16 APR 2026 to 14 MAY 2026