

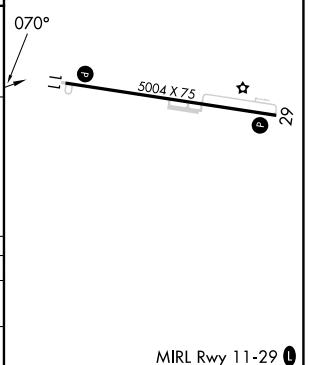
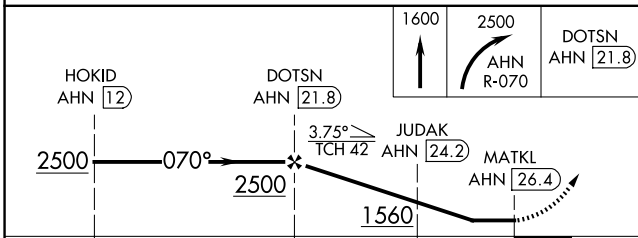
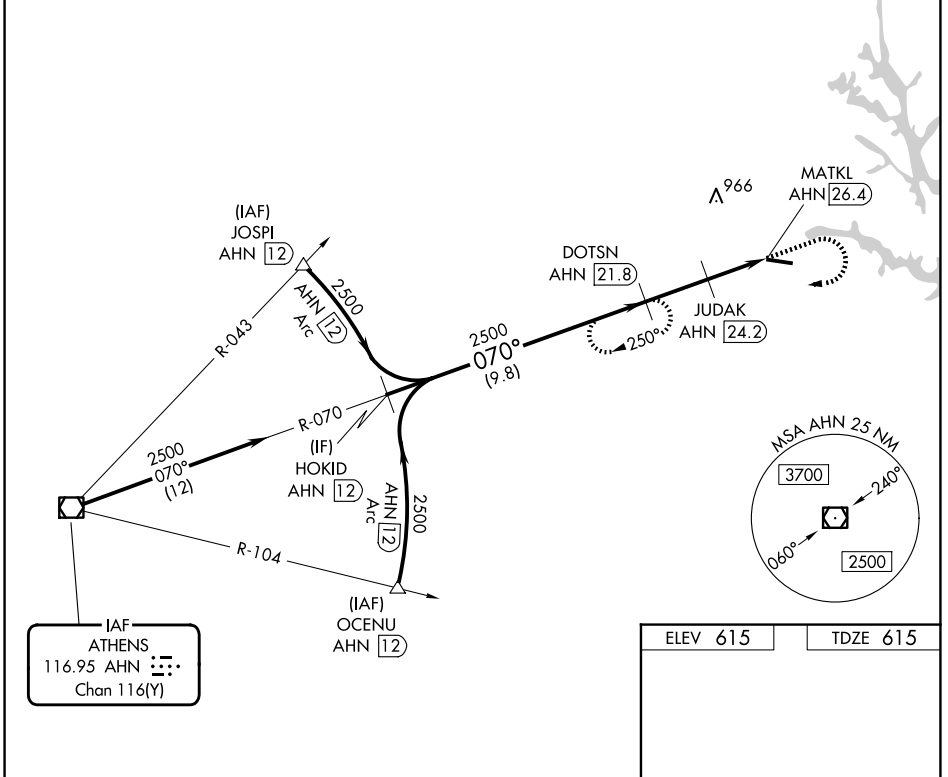
VOR/DME AHN 116.95 Chan 116(Y)	APP CRS 070°	Rwy Ldg TDZE Apt Elev 5004 615 615
--	------------------------	--

VOR RWY 11

ELBERT COUNTY-PATZ FLD (EBA)

DME required.	MISSED APPROACH: Climb to 1600 then climbing right turn to 2500 on AHN VOR/DME R-070 to DOTSN/AHN 21.8 DME and hold.
---------------	--

AWOS-3 118.15	ATLANTA CENTER 127.5 316.05	UNICOM 122.8 (CTAF)
-------------------------	---------------------------------------	-------------------------------



CATEGORY	A	B	C	D
S-11	1200-1	585 (600-1)	1200-1 ³ / ₄ 585 (600-1 ³ / ₄)	NA
CIRCLING	1200-1 585 (600-1)	1200-1 ¹ / ₄ 585 (600-1 ¹ / ₄)	1280-2 665 (700-2)	NA

SE-4, 16 APR 2026 to 14 MAY 2026

SE-4, 16 APR 2026 to 14 MAY 2026