

VOR EDN <b>116.6</b>	APP CRS <b>065°</b>	Rwy Ldg <b>5080</b>
		TDZE <b>360</b>
		Apt Elev <b>361</b>

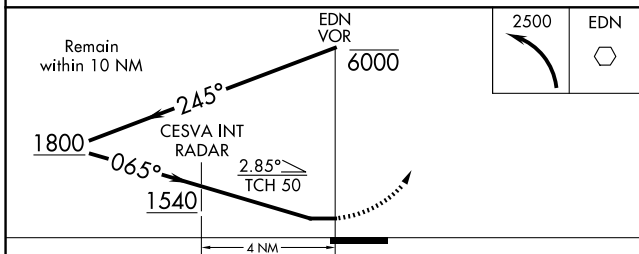
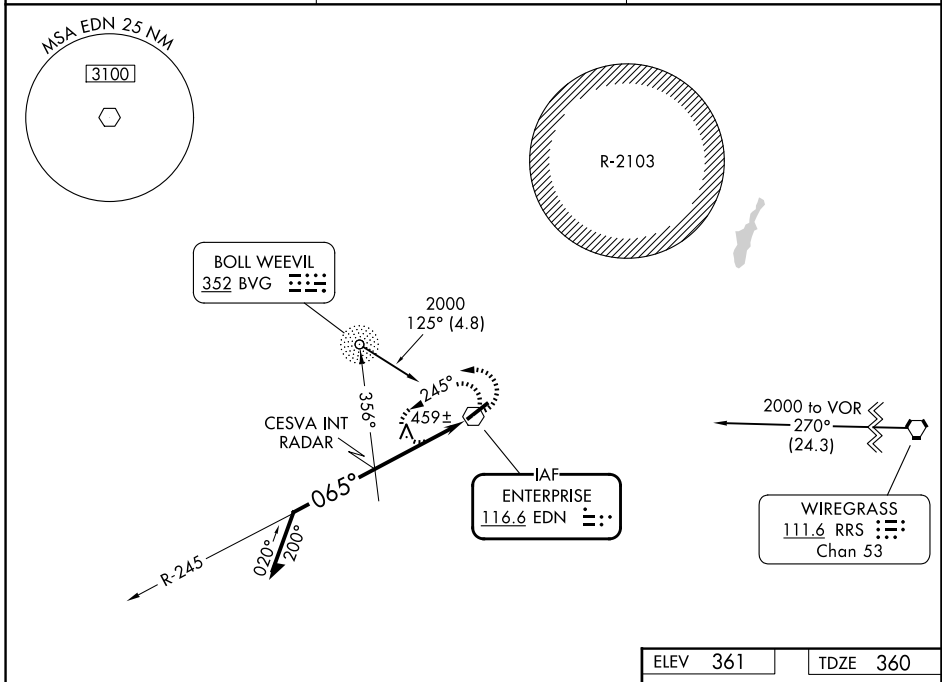
# VOR RWY 5

ENTERPRISE MUNI(EDN)

**⚠** ADF or RADAR required.  
**⚠** NA Use Cairns AAF (Fort Rucker) alimeter setting.

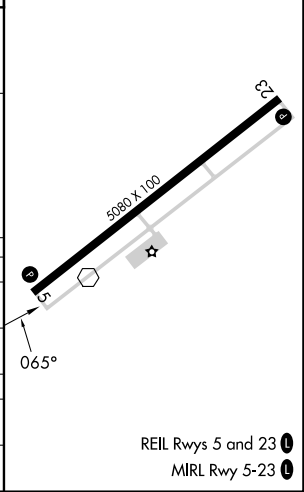
**MISSED APPROACH:**  
 Climbing left turn to 2500  
 in EDN VOR holding pattern.

AWOS-3PT <b>118.9</b>	CAIRNS APP CON * <b>133.45 239.275</b>	UNICOM <b>122.8 (CTAF)</b>
--------------------------	-------------------------------------------	-------------------------------



ELEV 361	TDZE 360
----------	----------

CATEGORY	A	B	C	D
S-5	1540-1¼ 1180 (1200-1¼)	1540-1½ 1180 (1200-1½)	1540-3 1180 (1200-3)	NA
CIRCLING	1540-1¼ 1179 (1200-1¼)	1540-1½ 1179 (1200-1½)	1540-3 1179 (1200-3)	NA
CESVA INT/RADAR MINIMUMS				
S-5	820-1	460 (500-1)	820-1¼ 460 (500-1¼)	NA
CIRCLING	920-1	559 (600-1)	1100-2 739 (800-2)	NA



SE-4, 16 APR 2026 to 14 MAY 2026

SE-4, 16 APR 2026 to 14 MAY 2026