

WAAS CH <b>40044</b> <b>W34A</b>	APP CRS <b>347°</b>	Rwy Ldg TDZE Apt Elev	<b>2797</b> <b>1363</b> <b>1363</b>
--	------------------------	-----------------------------	---

# RNAV (GPS) RWY 34

ROCK RAPIDS MUNI (R.R.Q)

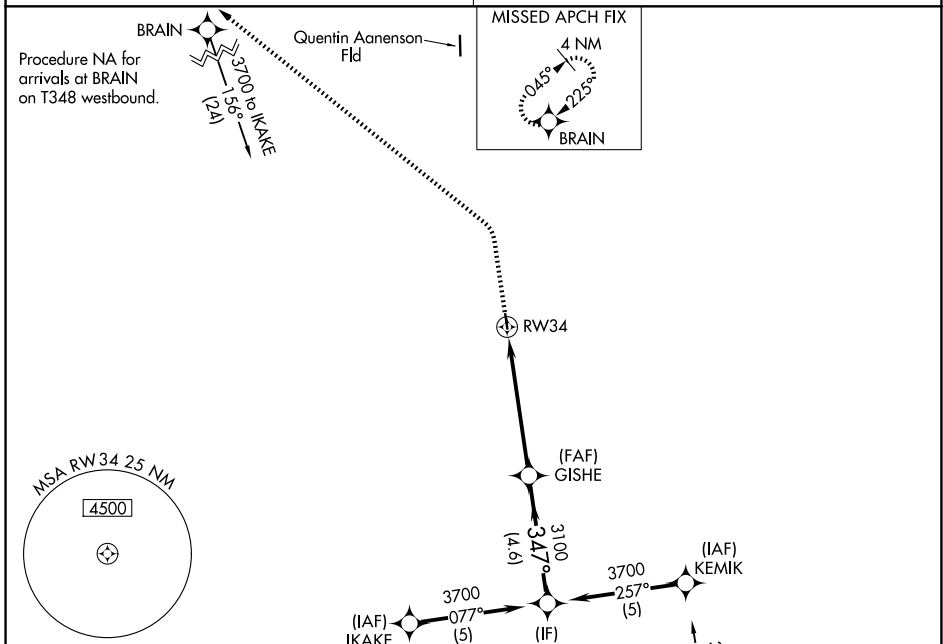
RNP APCH - GPS.

**NA** Procedure NA at night. Rwy 34 helicopter visibility reduction below 1 SM NA. Use Sioux Falls, SD altimeter setting.

MISSED APPROACH: Climb to 2200 then climbing left turn to 3700 direct BRAIN and hold.

SIoux FALLS APP CON \*  
**126.9 284.725**

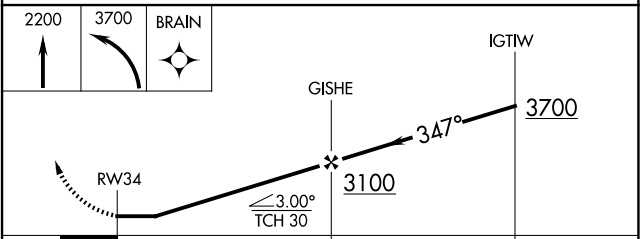
UNICOM  
**122.8 (CTAF) 0**



ELEV 1363 TDZE 1363

MIRL Rwy 16-34 **0**

REIL Rws 16 and 34 **0**



CATEGORY	A	B	C	D
LP MDA	1960-1	597 (600-1)		NA
LNAV MDA	1960-1	597 (600-1)		NA
CIRCLING	1960-1	2040-1		NA
	597 (600-1)	677 (700-1)		

NC-3, 16 APR 2026 to 14 MAY 2026

NC-3, 16 APR 2026 to 14 MAY 2026