

WAAS CH <b>69317</b> <b>W31A</b>	APP CRS <b>313°</b>	Rwy Idg TDZE Apt Elev	<b>4698</b> <b>2349</b> <b>2349</b>
--	------------------------	-----------------------------	---

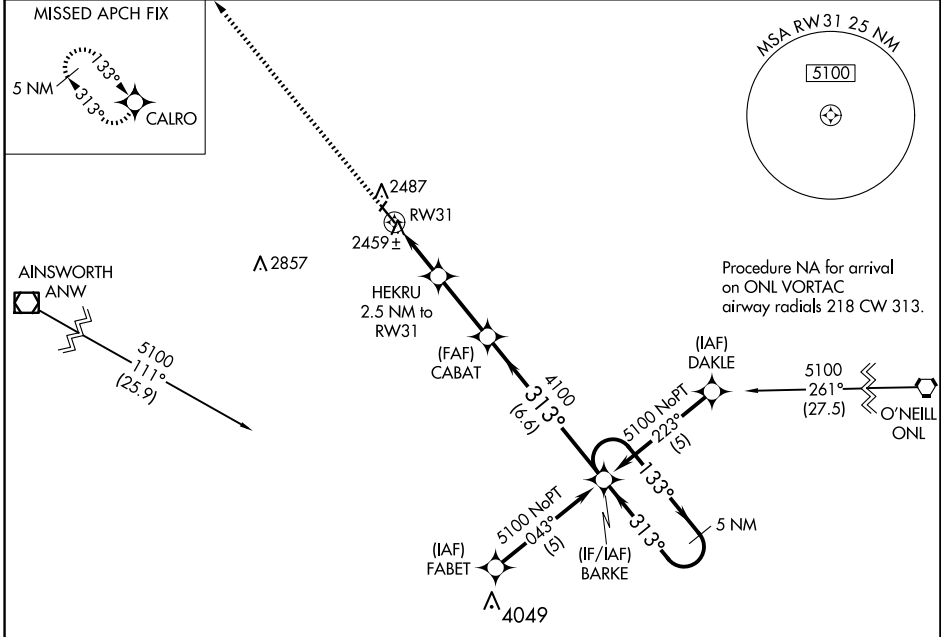
# RNAV (GPS) RWY 31

ROCK COUNTY (R.B.E.)

**⚠ NA** When VGSi inoperative, Circling Rwy 13 NA at night. Baro-VNAV NA. DME/DME RNP-0.3 NA. Use Ainsworth altimeter setting; when not received, use O'Neill altimeter setting and increase all DA 59 feet and all MDA 60 feet. Circling NA to Rwy 2-20.

**MISSED APPROACH:** Climb to 4600 direct CALRO and hold.

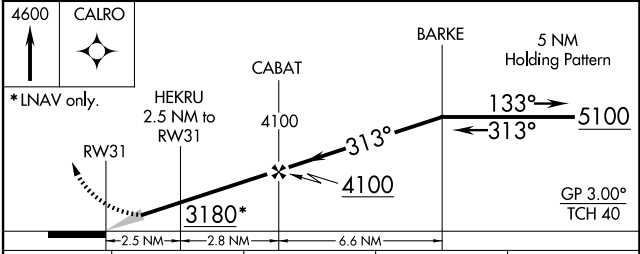
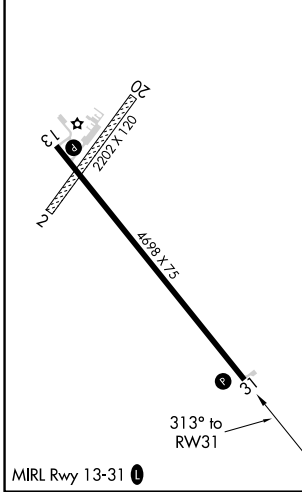
ANW AWOS-3 <b>118.325</b>	DENVER CENTER <b>127.95 338.2</b>	CTAF <b>122.90</b>
------------------------------	--------------------------------------	-----------------------



NC-2, 16 APR 2026 to 14 MAY 2026

NC-2, 16 APR 2026 to 14 MAY 2026

ELEV 2349	TDZE 2349
-----------	-----------



CATEGORY	A	B	C	D
LPV DA	2676-1¼	327 (400-1¼)		NA
LNAV/VNAV DA	2806-1¾	457 (500-1¾)		NA
LNAV MDA	2840-1	491 (500-1)		NA
CIRCLING	2920-1	571 (600-1)		NA