

RNAV-1 DME/DME/IRU or GPS.

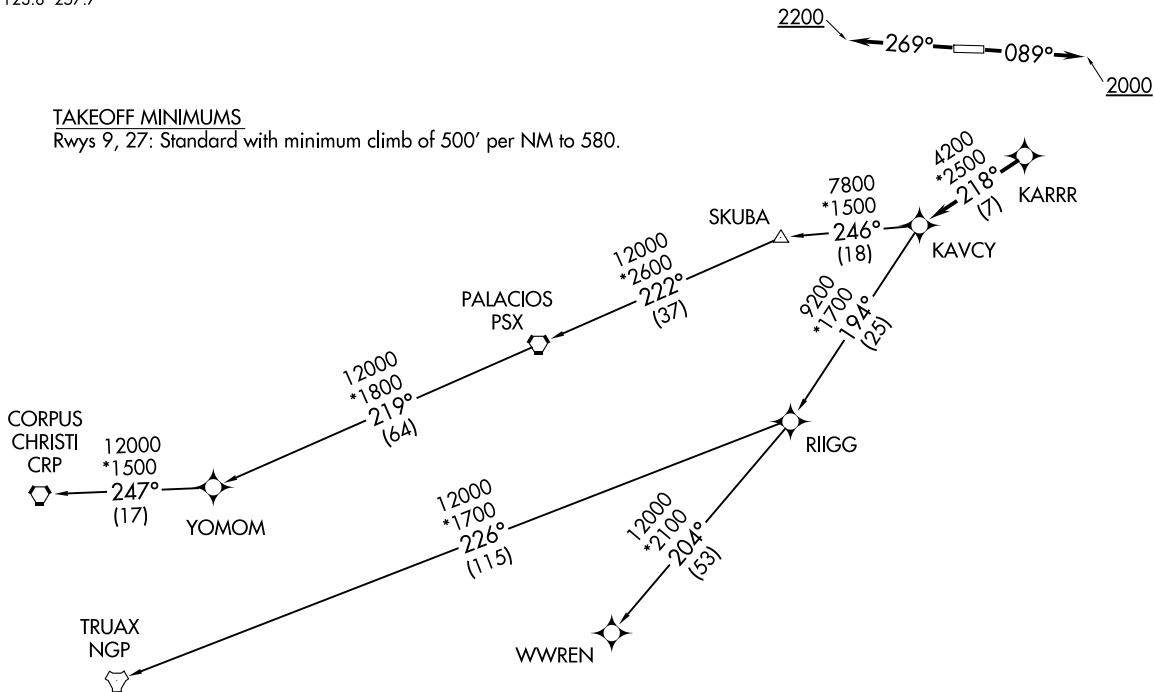
RADAR required.

TOP ALTITUDE:  
ASSIGNED BY ATC

AWOS-3  
123.625  
CTAF  
123.0  
CLNC DEL  
120.8  
HOUSTON DEP CON  
123.8 257.7

TAKEOFF MINIMUMS

Rwys 9, 27: Standard with minimum climb of 500' per NM to 580.



(NARRATIVE ON FOLLOWING PAGE)

NOTE: Chart not to scale.

KARRR SEVEN DEPARTURE (RNAV)  
(KARRR7.KARRR) 29DEC22

HOUSTON, TEXAS  
HOUSTON/SOUTHWEST (AXH)

(KARRR7.KARRR) 22363  
KARRR SEVEN DEPARTURE (RNAV)

AL-6373 (FAA)  
HOUSTON/SOUTHWEST (AXH)  
HOUSTON, TEXAS

# KARRR SEVEN DEPARTURE (RNAV)



## DEPARTURE ROUTE DESCRIPTION

TAKEOFF RUNWAY 9: Climb on heading 089° to 2000, for RADAR vectors to KARRR, thence. . . .

TAKEOFF RUNWAY 27: Climb on heading 269° to 2200, for RADAR vectors to KARRR, thence. . . .

. . . .on track 218° to KAVCY, then on (transition). Maintain ATC assigned altitude. Expect filed altitude 10 minutes after departure.

CORPUS CHRISTI TRANSITION (KARRR7.CRP)

PALACIOS TRANSITION (KARRR7.PSX)

TRUAX TRANSITION (KARRR7.NGP)

WWREN TRANSITION (KARRR7.WWREN)

YOMOM TRANSITION (KARRR7.YOMOM)

SC-5, 16 APR 2026 to 14 MAY 2026

SC-5, 16 APR 2026 to 14 MAY 2026