

# LUFKIN FOUR DEPARTURE

HOUSTON, TEXAS

HOUSTON DEP CON  
 123.8 257.7  
 AWOS-3  
 123.625  
 CLNC DEL  
 120.8  
 CTAf  
 123.0

**TOP ALTITUDE:  
 ASSIGNED BY ATC**

LITTLE ROCK  
 115.1 LIT  
 Chan 98

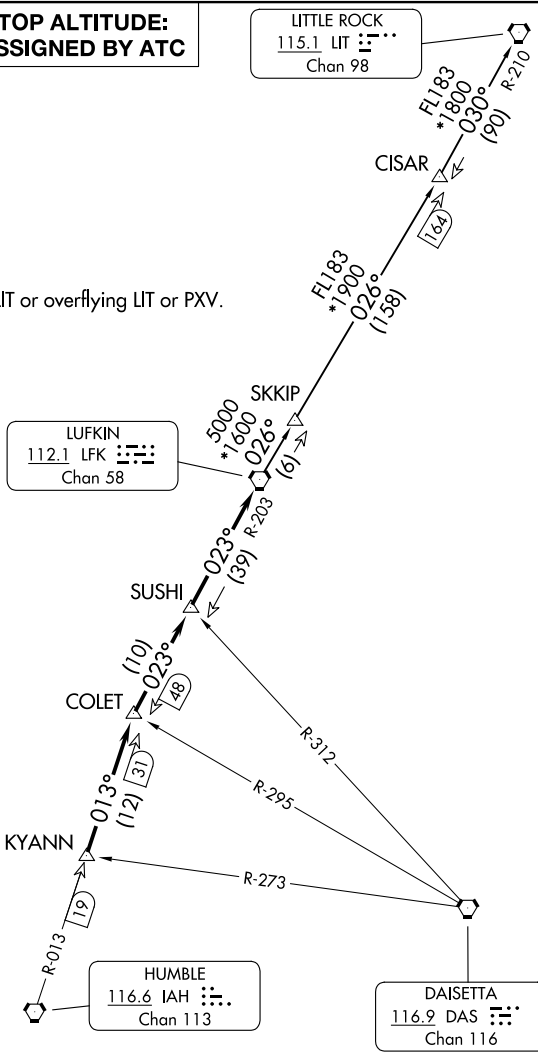
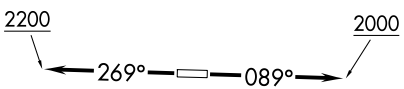
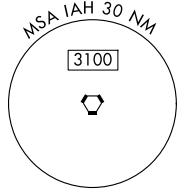
RADAR and DME required.

NOTE: For aircraft destined LIT or overflying LIT or PXV.

LUFKIN  
 112.1 LFK  
 Chan 58

HUMBLE  
 116.6 IAH  
 Chan 113

DAISETTA  
 116.9 DAS  
 Chan 116



**TAKEOFF MINIMUMS**  
 Rwy 9: Standard.  
 Rwy 27: Standard with minimum climb  
 of 230'/NM to 2700.

NOTE: Chart not to scale.

(CONTINUED ON FOLLOWING PAGE)

SC-5, 16 APR 2026 to 14 MAY 2026

SC-5, 16 APR 2026 to 14 MAY 2026

# LUFKIN FOUR DEPARTURE



## DEPARTURE ROUTE DESCRIPTION

TAKEOFF RUNWAY 9: Climb on heading 089° to 2000 before turning. When entering controlled airspace, climb on assigned heading for RADAR vectors to KYANN INT. Maintain ATC assigned altitude. Expect filed altitude 10 minutes after departure, thence. . .

TAKEOFF RUNWAY 27: Climb on heading 269° to 2200 before turning. When entering controlled airspace, climb on assigned heading for RADAR vectors to KYANN INT. Maintain ATC assigned altitude. Expect filed altitude 10 minutes after departure, thence. . .

. . .on IAH R-013 to COLET INT, then on depicted route to LFK VORTAC.

LITTLE ROCK TRANSITION (LFK4.LIT): From over LFK VORTAC on LFK R-026 to CISAR, then on LIT R-210 to LIT VORTAC.

SC-5, 16 APR 2026 to 14 MAY 2026

SC-5, 16 APR 2026 to 14 MAY 2026