

| | | | |
|--|------------------------|---|-------------|
| WAAS CH 42931 W17A | APP CRS 174° | Rwy Idg TDZE 229 Apt Elev 229 | 5003 |
|--|------------------------|---|-------------|

RNAV (GPS) RWY 17

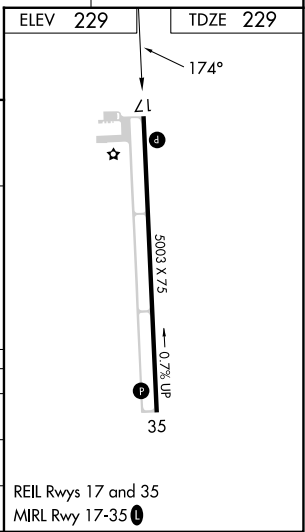
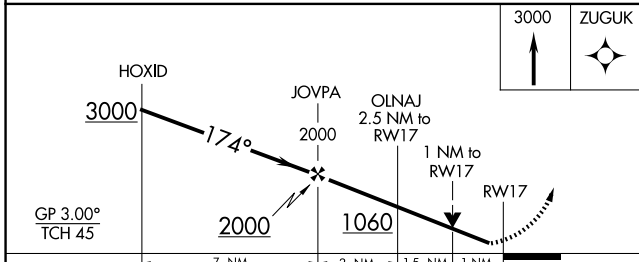
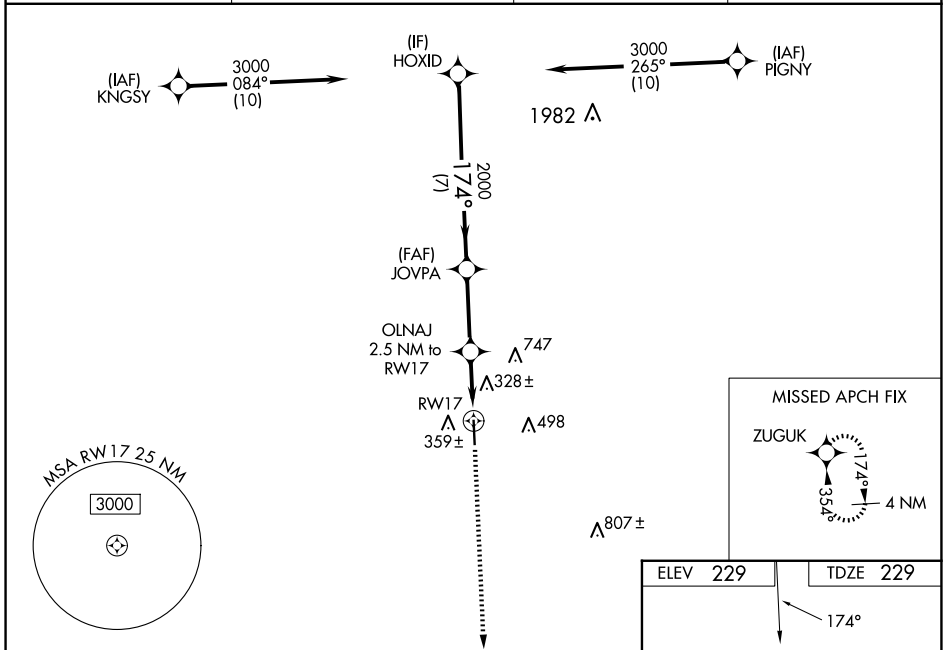
NAVASOTA MUNI (60R)

RNP APCH - GPS.

⚠ Rwy 17 helicopter visibility reduction below 3/4 NA. Baro-VNAV and VDP NA when using 11R altimeter setting. For uncompensated Baro-VNAV systems, LNAV/VNAV NA below -15C or above 54C. When local altimeter setting not received, use 11R altimeter setting and increase LPV DA to 529 feet and all visibilities 1/8 SM; increase LNAV/VNAV DA to 635 feet and all visibilities 1/8 SM; increase all MDAs 60 feet and LNAV visibility Cat C and D 1/8 SM.

MISSED APPROACH: Climb to 3000 direct ZUGUK and hold.

| | | | |
|----------------------------|--|----------------------|--------------|
| AWOS-3PT 120.925 | HOUSTON APP CON 134.3 360.85 | CTAF 122.9 | 123.3 |
|----------------------------|--|----------------------|--------------|



| CATEGORY | A | B | C | D |
|--------------|---|-------|-------------|---|
| LPV DA | | 479-1 | 250 (300-1) | |
| LNAV/VNAV DA | | 585-1 | 356 (400-1) | |
| LNAV MDA | | 580-1 | 351 (400-1) | |

SC-5, 16 APR 2026 to 14 MAY 2026

SC-5, 16 APR 2026 to 14 MAY 2026