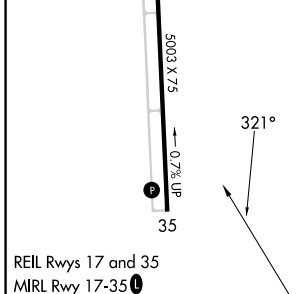
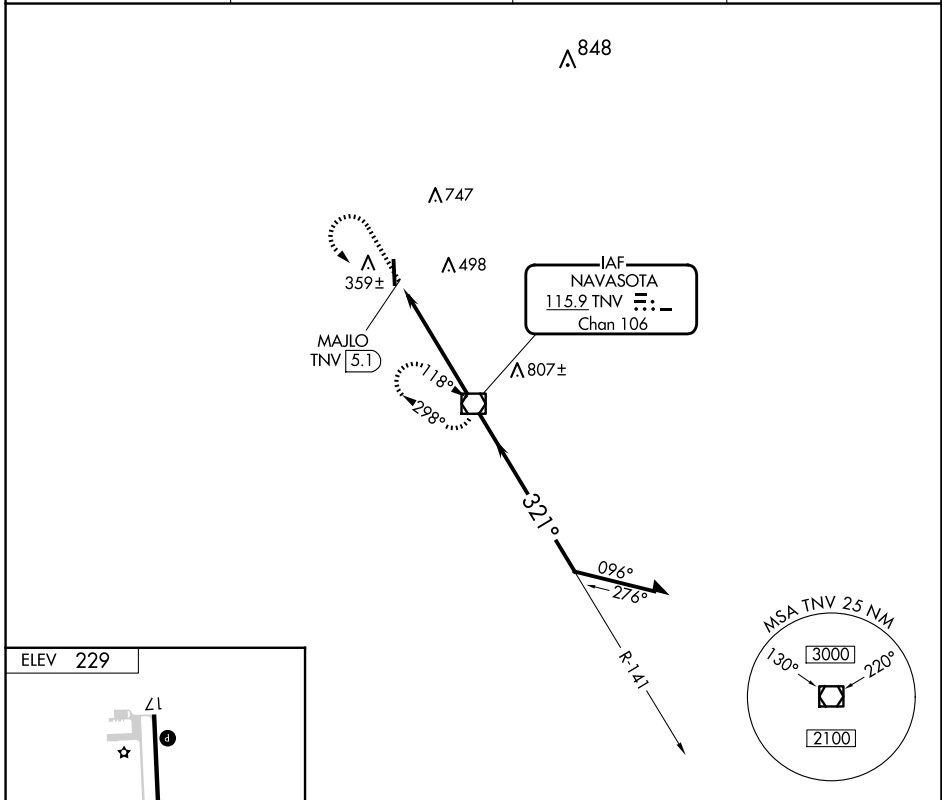


VOR/DME TNV <b>115.9</b> Chan <b>106</b>	APP CRS <b>321°</b>	Rwy Idg TDZE Apt Elev	<b>N/A</b> <b>N/A</b> <b>229</b>
--	------------------------	-----------------------------	--

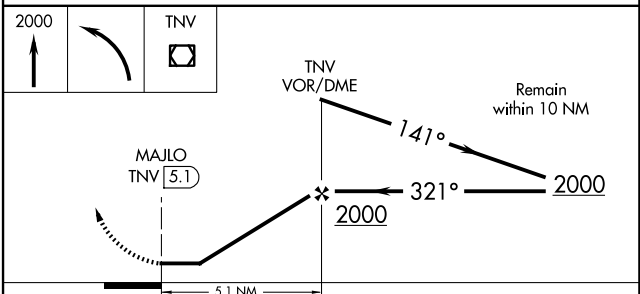
**VOR-A**  
NAVASOTA MUNI (60R)

**NA** When local altimeter setting not received, use Brenham altimeter setting. MISSED APPROACH: Climb to 2000 then left turn direct TNV VOR/DME and hold.

AWOS-3PT <b>120.925</b>	HOUSTON APP CON <b>134.3 360.85</b>	CTAF <b>122.9</b>	<b>123.3 0</b>
----------------------------	--	----------------------	----------------



ELEV 229					
REIL Rwy 17 and 35					
MIRL Rwy 17-35 0					
FAF to MAP 5.1 NM					
Knots	60	90	120	150	180
Min:Sec	5:06	3:24	2:33	2:02	1:42



CATEGORY	A	B	C	D
CIRCLING	820-1	591 (600-1)	1100-2½ 871 (900-2½)	1100-2¾ 871 (900-2¾)

SC-5, 16 APR 2026 to 14 MAY 2026

SC-5, 16 APR 2026 to 14 MAY 2026