

APP CRS	Rwy Ldg	4001
178°	TDZE	1214
	Apt Elev	1226

RNAV (GPS) RWY 18

CHEROKEE COUNTY RGNL (CKP)

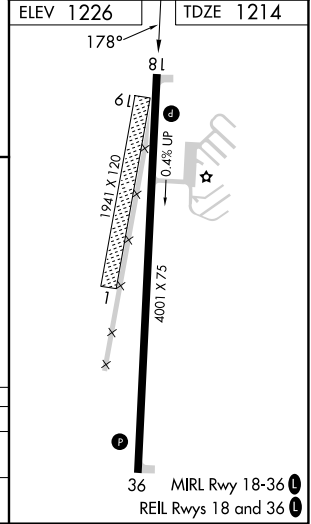
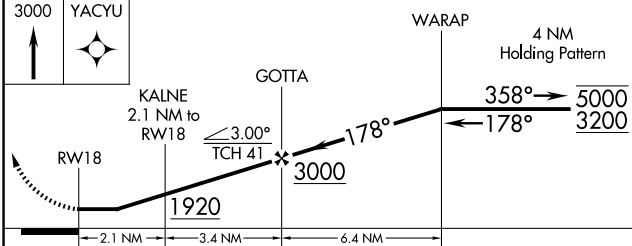
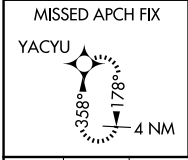
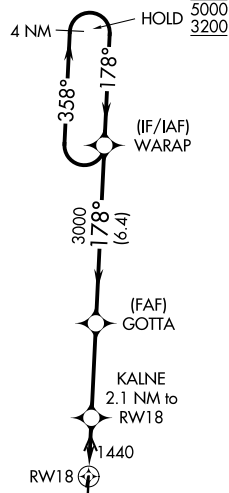
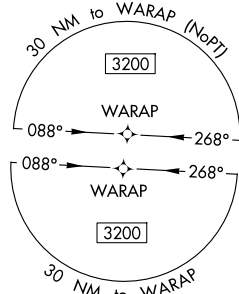
RNP APCH.

▼ Circling NA to Rwys 1 and 19. Rwy 18 helicopter visibility reduction below 1 SM NA. Rwy 18 Straight-in and Circling NA at night.

▲

MISSED APPROACH: Climb to 3000 direct YACYU and hold.

AWOS-3 119.225	MINNEAPOLIS CENTER 125.025 235.625	UNICOM 122.8 (CTAF) 0
--------------------------	--	---------------------------------



CATEGORY	A	B	C	D
LNVA MDA	1740-1	526 (600-1)	1740-1½	526 (600-1½)
CIRCLING	1760-1 534 (600-1)	1820-1 594 (600-1)	2100-2½ 874 (900-2½)	2160-3 934 (1000-3)

NC-3, 16 APR 2026 to 14 MAY 2026

NC-3, 16 APR 2026 to 14 MAY 2026