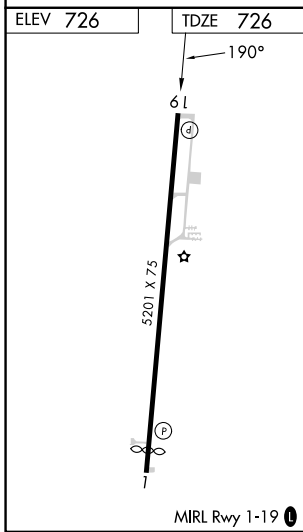
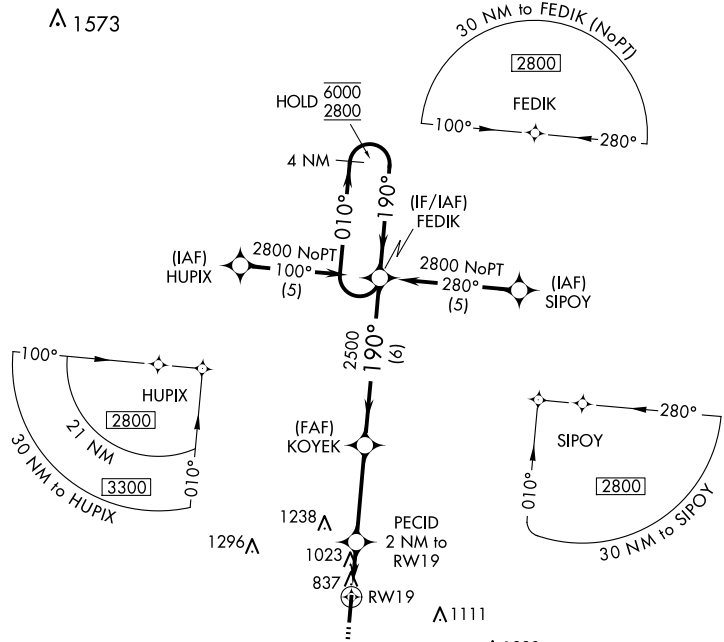


APP CRS <b>190°</b>	Rwy Idg TDZE Apt Elev	<b>5201</b> <b>726</b> <b>726</b>
------------------------	-----------------------------	---

# RNAV (GPS) RWY 19

JAMES A RHODES (JRO)

RNP APCH - GPS.		MISSED APPROACH: Climb to 2800 direct OSATE and hold.
<p>Procedure NA at night. Rwy 19 helicopter visibility reduction below 1 SM NA.</p>		
AWOS-3PT <b>118.825</b>	HUNTINGTON APP CON <b>128.4 270.1</b>	UNICOM <b>122.7 (CTAF) 0</b>



ELEV 726	TDZE 726	MISSED APCH FIX OSATE	
2800	OSATE	VGSIs and descent angles not coincident (VGSi Angle 4.00/TCH 45). FEDIK 4 NM Holding Pattern	
RWY 19 3.32° TCH 40 1460 2500		KOYEK PECID 2 NM to RWY 19 190° / 010° / 190° 6000 / 2800	
2 NM	3.5 NM	6 NM	
CATEGORY	A	B	C
LNAV MDA	1280-1	554 (600-1)	1280-1½ 554 (600-1½)
CIRCLING	1340-1 614 (700-1)	1480-1 754 (800-1)	1680-3 954 (1000-3)

EC-2, 16 APR 2026 to 14 MAY 2026

EC-2, 16 APR 2026 to 14 MAY 2026