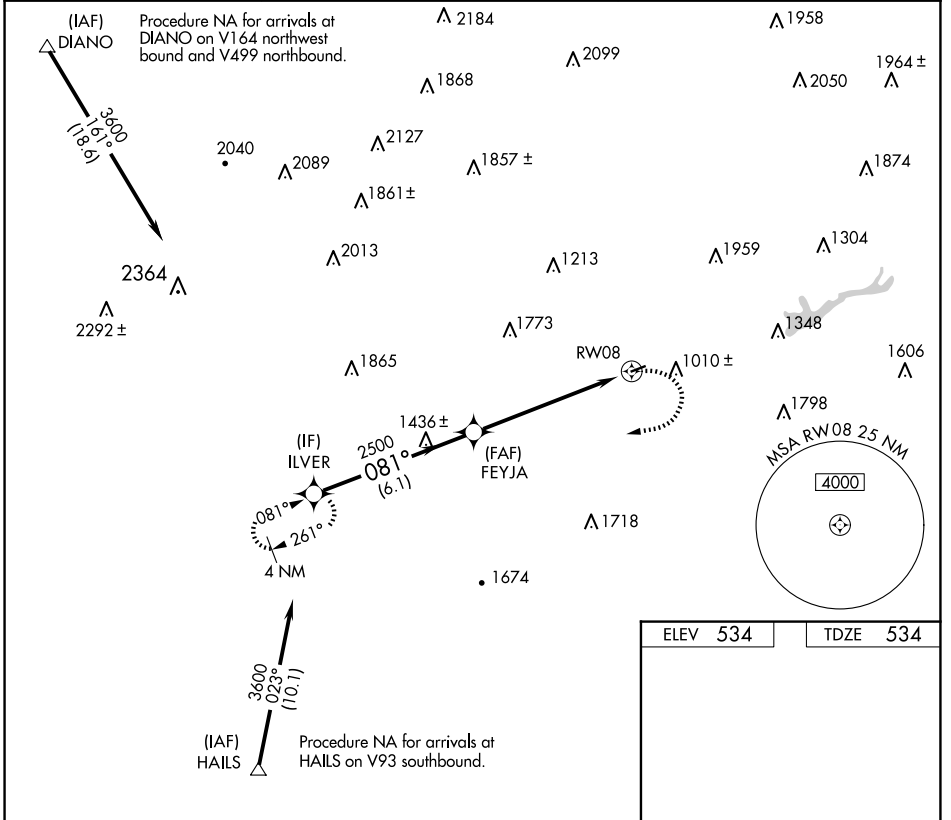


| | | | |
|--|------------------------|-----------------------------|---|
| WAAS CH 99421 W08A | APP CRS 081° | Rwy Ldg TDZE Apt Elev | 3000 534 534 |
|--|------------------------|-----------------------------|---|

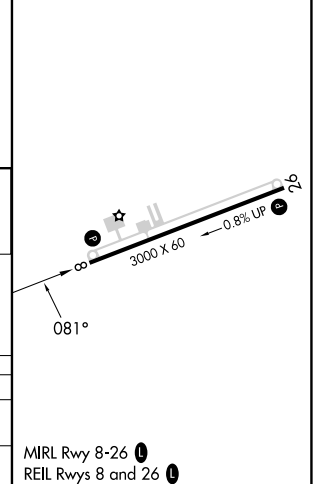
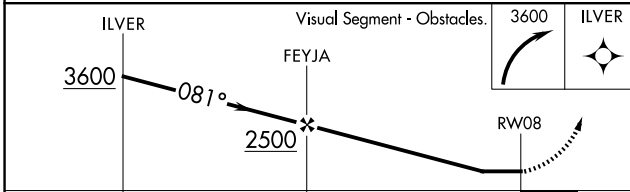
RNAV (GPS) RWY 8

JAKE ARNER MEML (22N)

| | | | |
|---|---|---|--|
| RNP APCH. | | MISSED APPROACH: Climbing right turn to 3600 direct ILVER and hold. | |
| <p>When local altimeter setting not received, use Lehigh Valley Intl altimeter setting and increase all MDA 60 feet. Rwy 8 helicopter visibility reduction below 3/4 SM NA.</p> <p>-22°C</p> | | | |
| AWOS-3PT 119.350 | ALLENTOWN APP CON 119.65 124.45 351.8 | UNICOM 123.05 (CTAF) 0 | |



| | |
|----------|----------|
| ELEV 534 | TDZE 534 |
|----------|----------|



| CATEGORY | A | B | C | D |
|----------|---------------------------|---------------------------|---|----|
| LP MDA | 1540-1¼ 1006 (1100-1¼) | 1540-1½ 1006 (1100-1½) | | NA |
| LNAV MDA | 1600-1¼ 1066 (1100-1¼) | 1600-1½ 1066 (1100-1½) | | NA |

NE-4, 16 APR 2026 to 14 MAY 2026

NE-4, 16 APR 2026 to 14 MAY 2026