

APP CRS	Rwy Idg	<b>3304</b>
<b>012°</b>	TDZE	<b>40</b>
	Apt Elev	<b>41</b>

# RNAV (GPS) RWY 1

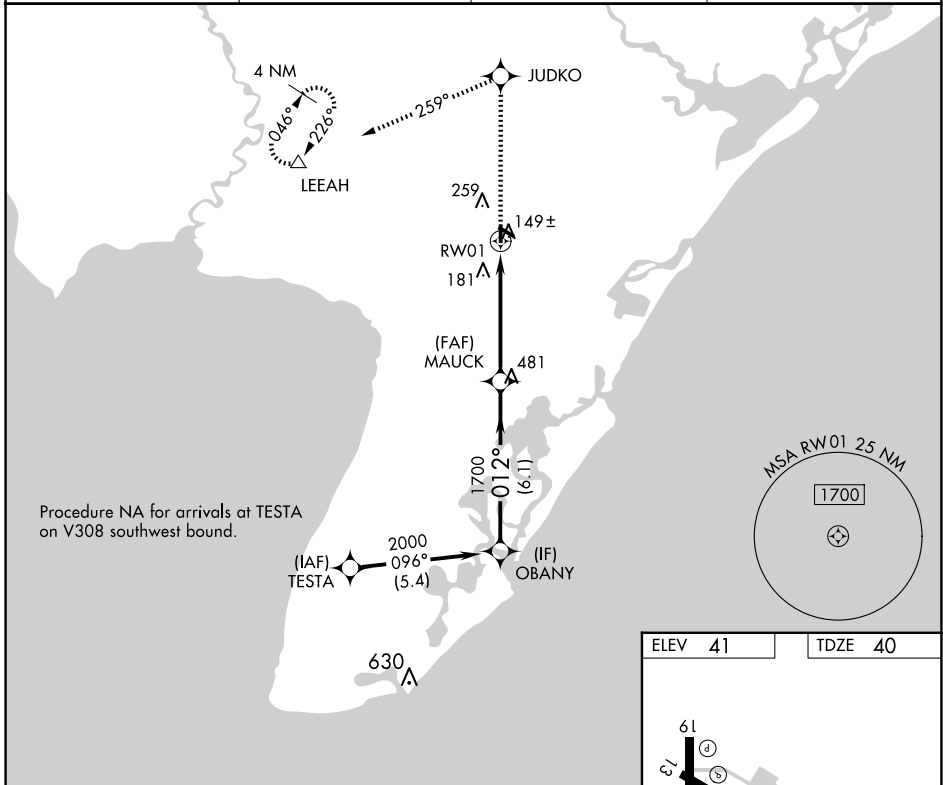
WOODBINE MUNI (OBI)

RNP APCH

**NA** When local altimeter setting not received, use Millville Muni altimeter setting and increase all MDA 60 feet, and increase LNAV and Circling Cat C visibility ¼ mile. VDP NA when using Millville Muni altimeter setting. Circling Rwy 13, 19, 31 NA at night. Rwy 1 helicopter visibility reduction below ¾ SM NA.

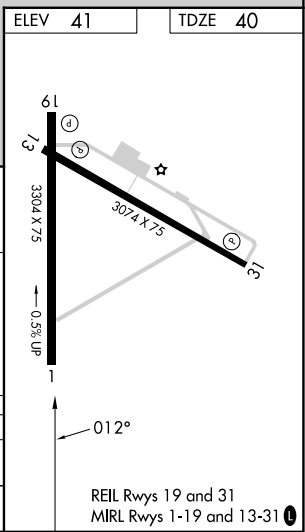
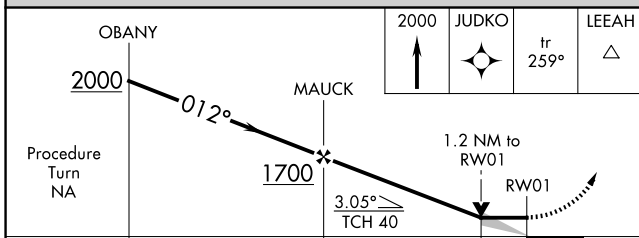
**MISSED APPROACH:** Climb to 2000 direct JUDKO and on track 259° to LEEAH and hold.

AWOS-3 <b>120.475</b>	ATLANTIC CITY APP CON <b>124.6 327.125</b>	GCO <b>121.725</b>	UNICOM <b>123.05 (CTAF) 0</b>
--------------------------	---	-----------------------	----------------------------------



NE-2, 16 APR 2026 to 14 MAY 2026

NE-2, 16 APR 2026 to 14 MAY 2026



CATEGORY	A	B	C	D
LNAV MDA	440-1	400 (400-1)	440-1½ 400 (400-1½)	NA
CIRCLING	620-1	579 (600-1)	620-1½ 579 (600-1½)	NA