

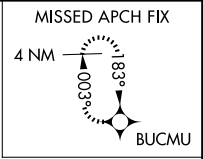
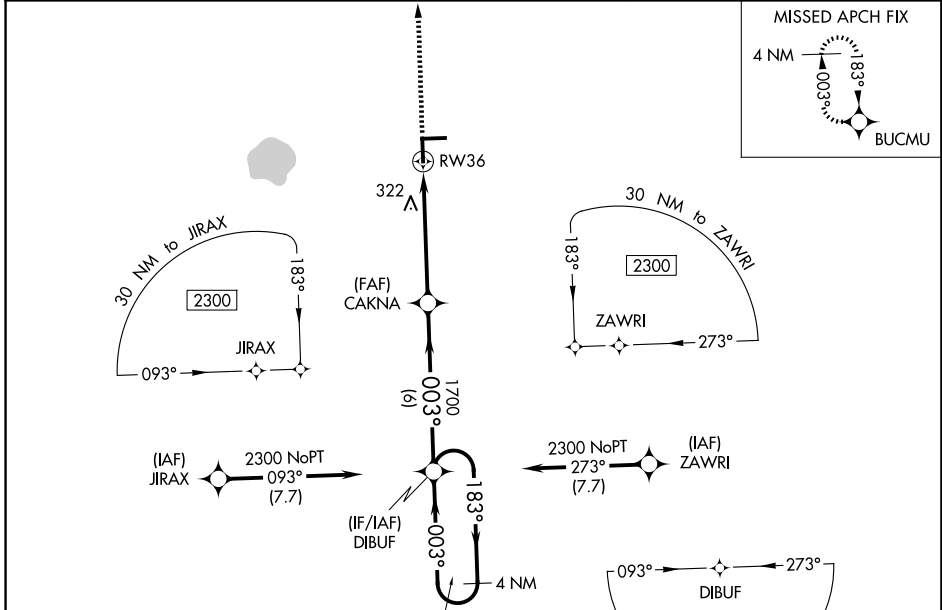
WAAS CH <b>73013</b> <b>W36A</b>	APP CRS <b>003°</b>	Rwy Ldg TDZE <b>34</b> Apt Elev <b>37</b>
--	------------------------	---

# RNAV (GPS) RWY 36

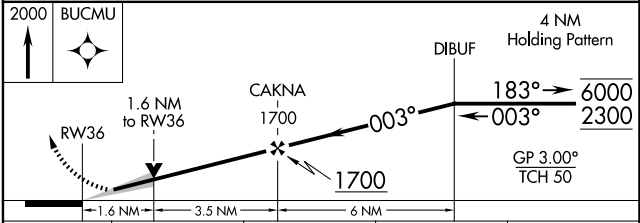
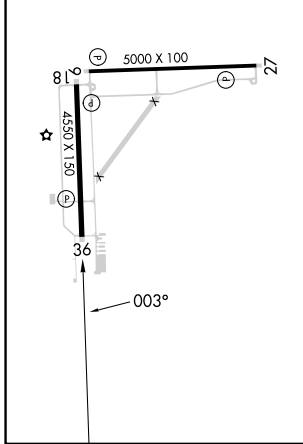
IMMOKALEE RGNL (IMIM)

RNP APCH-GPS.	MISSED APPROACH: Climb to 2000 direct BUCMU and hold.
<p><b>▽</b> For uncompensated Baro-VNAV systems, LNAV/VNAV</p> <p><b>▲</b> NA below 0°C or above 54°C.</p>	

AWOS-3 <b>118.525</b>	FORT MYERS APP CON ★ <b>124.125 371.85</b>	CTAF <b>122.9</b> <b>①</b>
--------------------------	---	-------------------------------



ELEV <b>37</b>	TDZE <b>34</b>
REIL Rwy 9, 18, 27, and 36 <b>①</b>	
MIRL Rwy 9-27 and 18-36 <b>②</b>	



CATEGORY	A	B	C	D
LPV DA		284-1	250 (300-1)	
LNAV/VNAV DA		303-1	269 (300-1)	
LNAV MDA	580-1	546 (600-1)	580-1½	546 (600-1½)
CIRCLING	580-1 543 (600-1)	640-1 603 (700-1)	640-1¾ 603 (700-1¾)	680-2 643 (700-2)

SE-3, 16 APR 2026 to 14 MAY 2026

SE-3, 16 APR 2026 to 14 MAY 2026