

WAAS CH <b>56334</b> <b>W15A</b>	APP CRS <b>154°</b>	Rwy Idg TDZE Apt Elev	<b>4200</b> <b>1378</b> <b>1379</b>
--	------------------------	-----------------------------	---

# RNAV (GPS) RWY 15

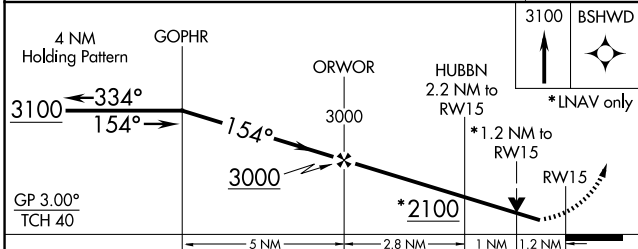
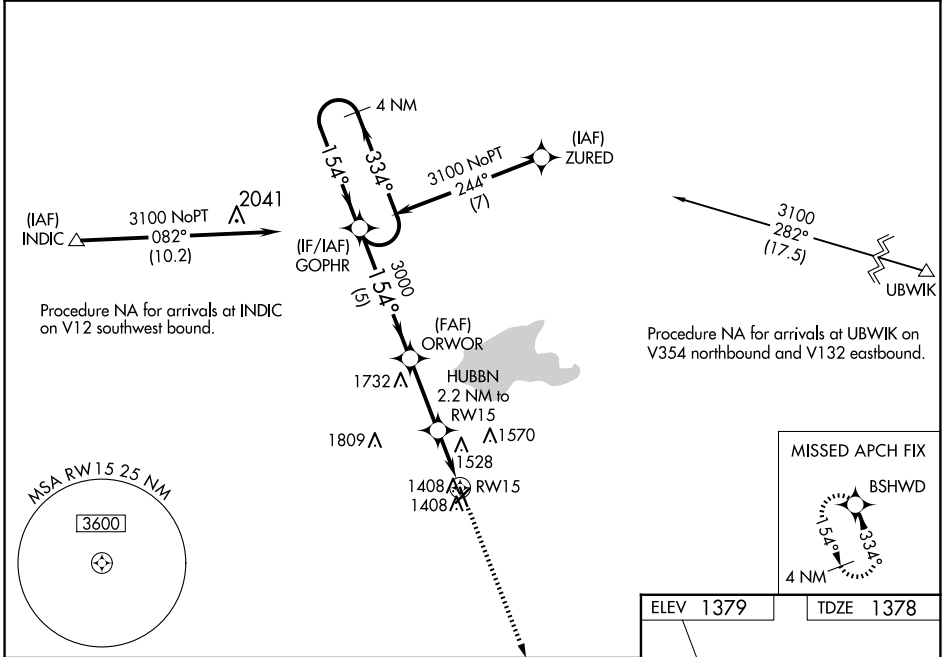
EL DORADO/CAPT JACK THOMAS MEML (EQA)

RNP APCH-GPS.

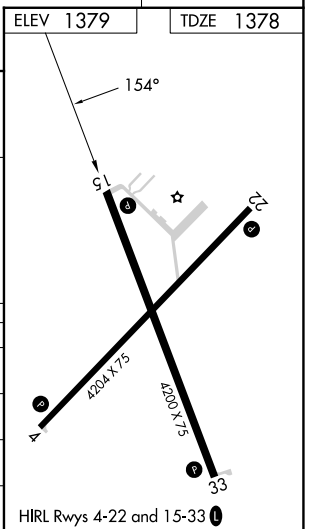
**NA** For uncompensated Baro-VNAV systems, LNAV/VNAV NA below -17°C or above 54°C. Rwy 15 helicopter visibility reduction below 3/4 SM NA. When local altimeter setting not received, use Colonel James Jabara altimeter setting and increase all DA 51 feet and all MDA 60 feet; increase LNAV/VNAV all Cats visibility 1/8 mile. Baro-VNAV and VDP NA when using Colonel James Jabara altimeter setting.

MISSED APPROACH:  
Climb to 3100 direct BSHWD and hold.

AWOS-3P <b>120.875</b>	WICHITA APP CON <b>134.8 269.1</b>	UNICOM <b>122.8 (CTAF)</b>
---------------------------	---------------------------------------	-------------------------------



CATEGORY	A	B	C	D
LPV DA	1628-1	250 (300-1)		NA
LNAV/VNAV DA	1843-1 1/2	465 (500-1 1/2)		NA
LNAV MDA	1780-1	402 (500-1)		NA
CIRCLING	1820-1 441 (500-1)	1960-1 581 (600-1)		NA



NC-2, 16 APR 2026 to 14 MAY 2026

NC-2, 16 APR 2026 to 14 MAY 2026