

RNAV (GPS) RWY 16

ANSON COUNTY/JEFF CLOUD FLD (A/F P)

APP CRS	Rwy Idg	5498
162°	TDZE	300
	Apt Elev	300

RNP APCH - GPS.

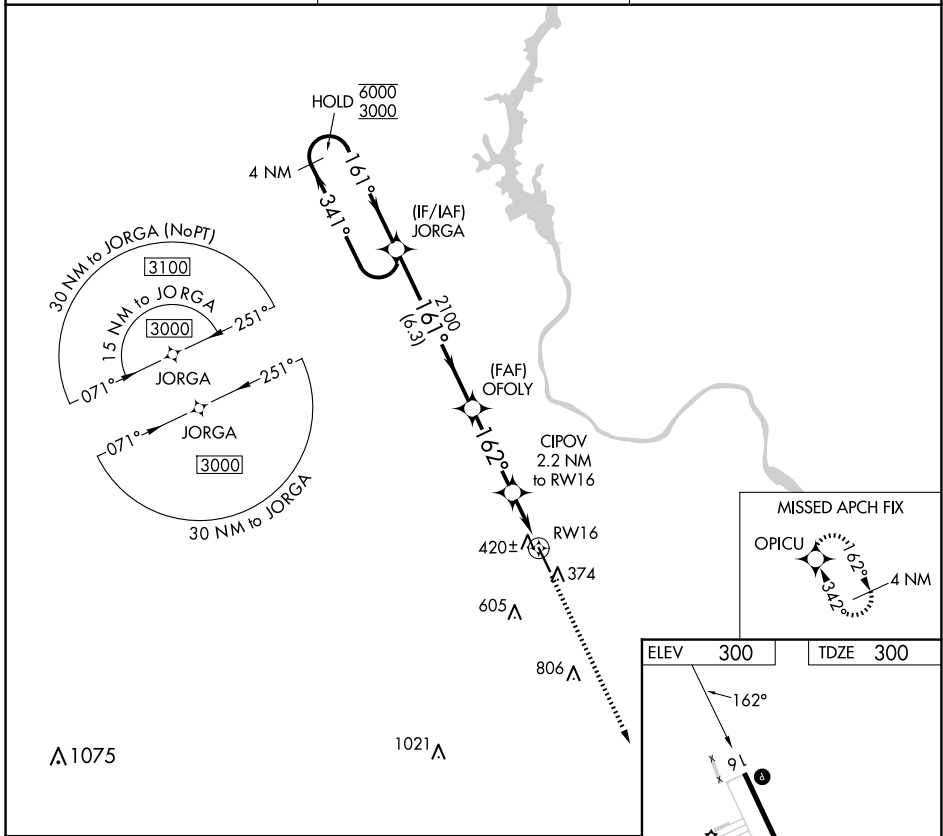
Procedure NA at night.
Rwy 16 helicopter visibility reduction below 1 SM NA.

MISSED APPROACH: Climb to 3000 direct OPICU and hold.

AWOS-3
119.325

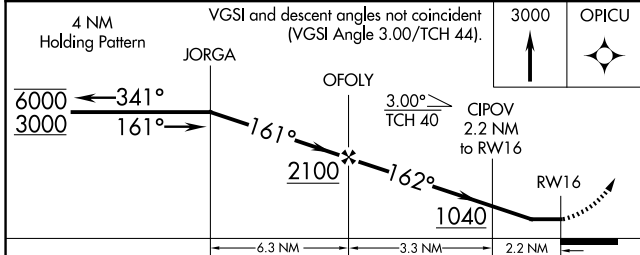
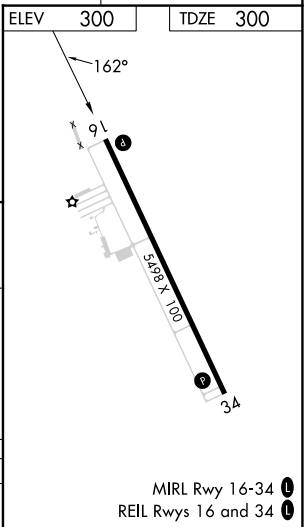
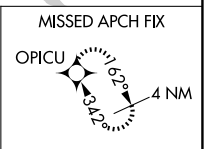
CHARLOTTE APP CON
120.05 307.8

UNICOM
122.8 (CTAF) 0



SE-2, 16 APR 2026 to 14 MAY 2026

SE-2, 16 APR 2026 to 14 MAY 2026



CATEGORY	A	B	C	D
LNAV MDA		680-1	380 (400-1)	

MIRL Rwy 16-34 0
REIL Rws 16 and 34 0