

WAAS CH 69408 W34A	APP CRS 342°	Rwy Idg TDZE Apt Elev	5498 299 300
--	------------------------	-----------------------------	---

RNAV (GPS) RWY 34

ANSON COUNTY/JEFF CLOUD FLD (A/F/P)

RNP APCH - GPS.

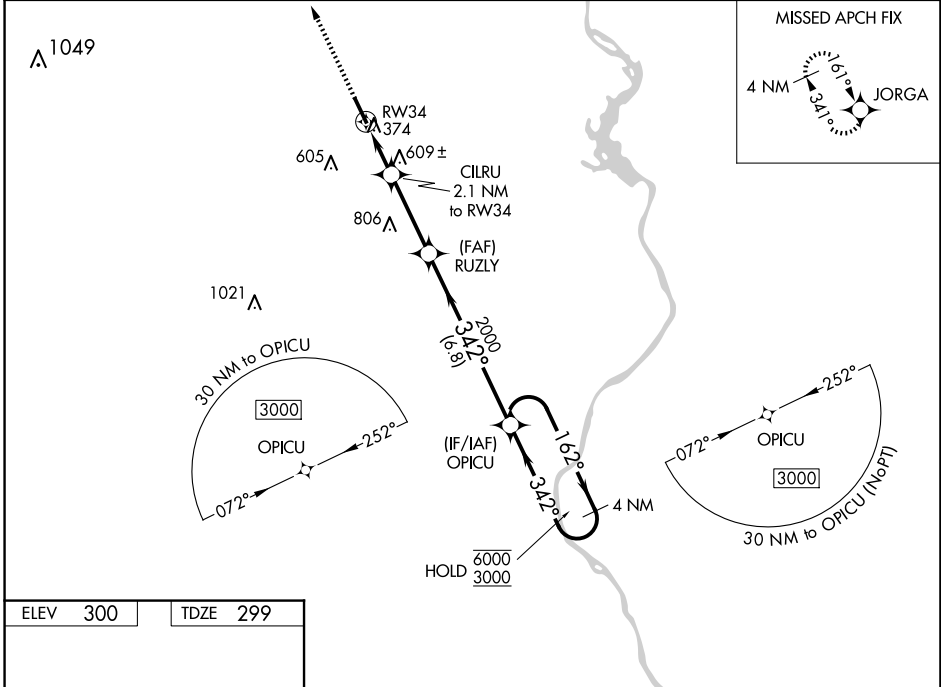
⚠
⚠ For uncompensated Baro-VNAV systems, procedure NA below -15°C or above 42°C. Rwy 34 helicopter visibility reduction below ¾ SM NA.

MISSED APPROACH: Climb to 3000 direct JORGA and hold.

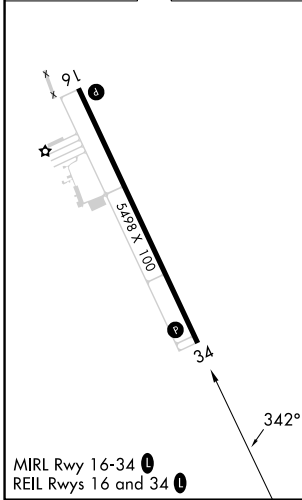
AWOS-3
119.325

CHARLOTTE APP CON
120.05 307.8

UNICOM
122.8 (CTAF) 0



ELEV 300	TDZE 299
----------	----------



3000	JORGA	OPICU	4 NM Holding Pattern
↑	✧		
CILRU 2.1 NM to RW34	RUZLY 2000	OPICU 6000/3000	GP 3.00° TCH 42
RW34	1000	342°	162° → 6000 ← 342° 3000
2.1 NM	3.1 NM	6.8 NM	
CATEGORY	A	B	C
LPV DA	649-1		350 (400-1)
LNAV/VNAV DA	957-17/8		658 (700-17/8)
LNAV MDA	860-1	561 (600-1)	860-15/8 561 (600-15/8)
CIRCLING	860-1	560 (600-1)	1080-21/4 780 (800-21/4) 1080-21/2 780 (800-21/2)

SE-2, 16 APR 2026 to 14 MAY 2026

SE-2, 16 APR 2026 to 14 MAY 2026