

WAAS CH <b>53409</b> <b>W09A</b>	APP CRS <b>093°</b>	Rwy Ldg TDZE Apt Elev	<b>4000</b> <b>1082</b> <b>1082</b>
--	------------------------	-----------------------------	---

# RNAV (GPS) RWY 9

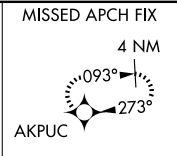
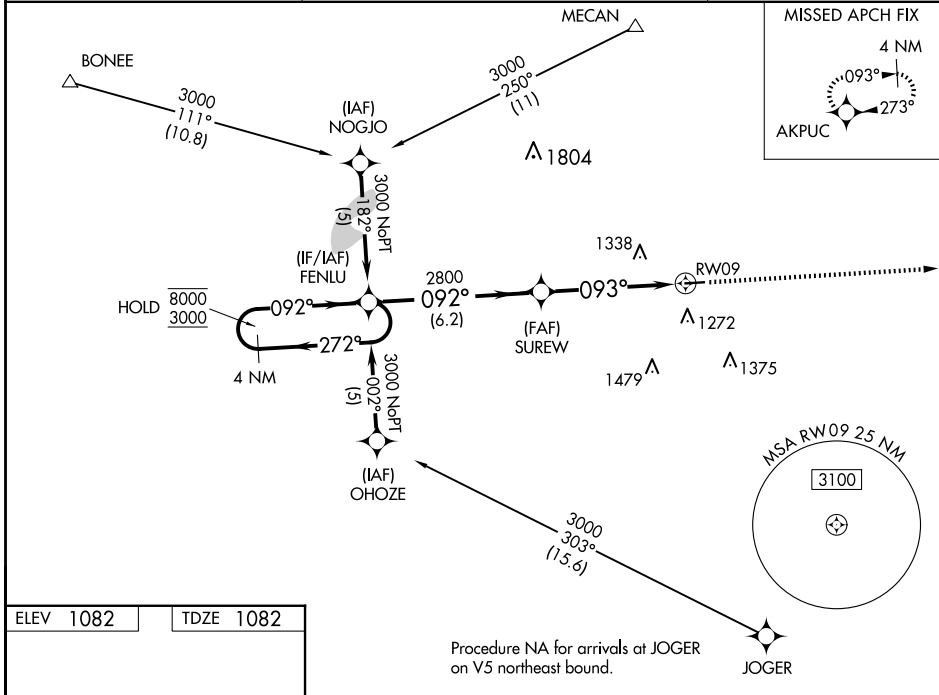
MADISON COUNTY (UYF)

RNP APCH - GPS.

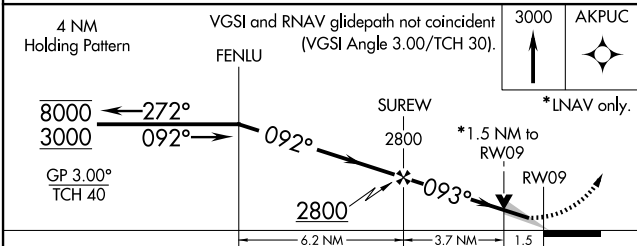
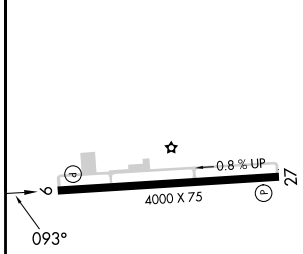
**⚠** For uncompensated Baro-VNAV systems, LNAV/VNAV NA below -17°C or above 54°C.

MISSED APPROACH: Climb to 3000 direct AKPUC and hold.

AWOS-3PT <b>120.85</b>	COLUMBUS APP CON <b>134.0 279.6</b>	UNICOM <b>123.0 (CTAF) 0</b>
---------------------------	--	---------------------------------



ELEV 1082	TDZE 1082
-----------	-----------



VGSI and RNAV glidepath not coincident (VGSI Angle 3.00/TCH 30).	3000	AKPUC		
CATEGORY	A	B	C	D
LPV DA	1332-1 250 (300-1)			
LNAV/VNAV DA	1548-1 3/4 466 (500-1 3/4)			
LNAV MDA	1580-1	498 (500-1)	1580-1 1/2 498 (500-1 1/2)	1580-1 1/2 498 (500-1 1/2)
CIRCLING	1600-1 518 (600-1)	1640-1 558 (600-1)	1640-1 1/2 558 (600-1 1/2)	1840-2 1/2 758 (800-2 1/2)

REIL Rwy 9 and 27 **0**  
MIRL Rwy 9-27 **0**

EC-2, 16 APR 2026 to 14 MAY 2026

EC-2, 16 APR 2026 to 14 MAY 2026